

Escherichia coli, Strain TB182A

Catalog No. NR-20450

This reagent is the tangible property of the U.S. Government.

Product Description: *Escherichia coli* (*E. coli*), strain TB182A was isolated between 1991 and 1992 from an infant with chronic diarrhea in a pediatric hospital in Seattle, Washington. Strain TB182A has been typed as an O55:H7 serotype, enteropathogenic *E. coli* (EPEC).

Lot¹: 63568097

Manufacturing Date: 17JUN2015

TEST	SPECIFICATIONS	RESULTS
Phenotypic Analysis Cellular morphology Colony morphology ² Motility (wet mount) VITEK [®] MS (MALDI-TOF)	Gram-negative rods Report results Report results Consistent with <i>E. coli</i>	Gram-negative rods Circular, convex, entire and cream (Figure 1) Motile Consistent with <i>E. coli</i>
Genotypic Analysis Sequencing of 16S ribosomal RNA gene (~ 1480 base pairs) Riboprinter [®] Microbial Characterization System	Consistent with <i>E. coli</i> Consistent with <i>E. coli</i>	Consistent with <i>E. coli</i> ³ Consistent with <i>E. coli</i>
PCR Assay of Extracted DNA 16S ribosomal RNA gene PCR amplification of chromosomal borne virulence markers <i>stx1</i> <i>stx2</i>	~ 1500 base pair amplicon Negative Negative	~ 1500 base pair amplicon Negative Negative
Purity (post-freeze)⁴	Growth consistent with <i>E. coli</i>	Growth consistent with <i>E. coli</i>
Viability (post-freeze)²	Growth	Growth

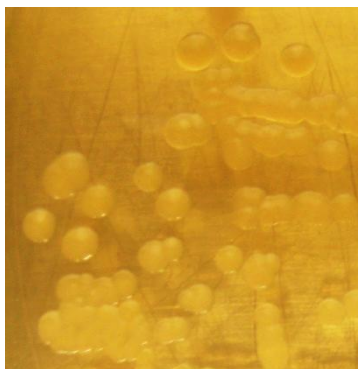
¹The deposited material was inoculated into Tryptic Soy broth and grown for 1 day at 37°C in an aerobic atmosphere, and the resulting subculture was viald and frozen. NR-20450 was produced by inoculation of the frozen subculture into Tryptic Soy broth and grown for 1 day at 37°C in an aerobic atmosphere. Broth inoculum was added to a Tryptic Soy agar kolle, which was grown for 1 day at 37°C in an aerobic atmosphere to produce this lot.

²1 day at 37°C in an aerobic atmosphere on Tryptic Soy agar

³Also consistent with *Shigella* species

⁴Purity of this lot was assessed for 8 days at 37°C in an aerobic atmosphere on Tryptic Soy agar with 5% defibrinated sheep blood.

Figure 1: Colony Morphology



Date: 11 NOV 2015

Signature:



BEI Resources Authentication

ATCC[®], on behalf of BEI Resources, hereby represents and warrants that the material provided under this certificate has been subjected to the tests and procedures specified and that the results described, along with any other data provided in this certificate, are true and accurate to the best of ATCC[®]'s knowledge.

ATCC[®] is a trademark of the American Type Culture Collection.

You are authorized to use this product for research use only. It is not intended for human use.

