

Activated Epsilon Toxin, from *Clostridium perfringens*

Catalog No. NR-4670

This reagent is the property of the U.S. Government.

Product Description: Epsilon protoxin was purified from culture supernatants of *Clostridium perfringens* ATCC® 3626™ and activated with trypsin to form the active pore-forming species.

Lot: 63732544

Manufacturing Date: 28SEP2015

TEST	SPECIFICATIONS	RESULTS
Appearance	Clear and colorless	Clear and colorless
SDS-PAGE (SYPRO Orange Densitometer Scan)	Protein band(s) of interest represents > 95% of total staining intensity above background	Epsilon monomer and detergent insoluble multimers represent > 98% of total staining intensity (Figure 1)
SELDI-TOF Mass Spectrometry	Measured mass within 5% of theoretical value (29230 daltons)	Measured mass within 0.1% of theoretical value (29160 daltons)
SELDI-TOF Mass Spectrometry of Glutamic C Endopeptidase Digest	> 50% of total residues accounted for in peptides of expected mass	59% of total residues accounted for in peptides of expected mass
Concentration by Bicinchoninic Acid Protein Assay	Report results	1.0 mg/mL
Absorbance Ratio (OD₂₈₀/OD₂₆₀)	Report results	1.4
Functional Activity by Western Blot¹ NR-4670 Carbonic anhydrase	Reactive Non-reactive	Reactive (Figure 2) Non-reactive (Figure 2)
Cytotoxicity in MDCK Cells Activated epsilon toxin (NR-4670)	Report results	CD ₅₀ = ~ 3 nM
Sterility	0.22 µm filter-sterilized	0.22 µm filter-sterilized
Endotoxin Content	< 10000 EU/mg	< 250 EU/mg

¹Using polyclonal immunoglobulin G produced by immunization of rabbits with peptides that correspond to distinct internal regions of the full-length epsilon toxin (BEI Resources NR-865)

Certificate of Analysis for NR-4670

Figure 1: SDS-PAGE

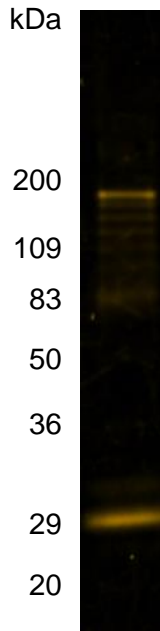
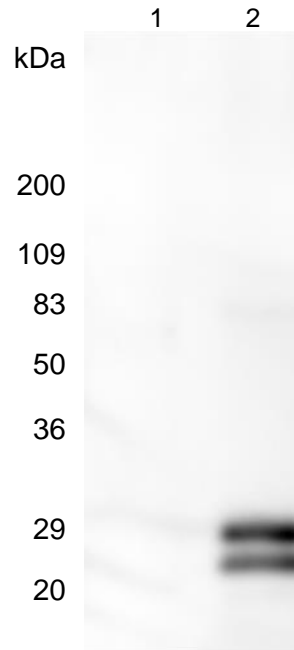


Figure 2: Western Blot



Lane 1: Carbonic anhydrase

Lane 2: Activated epsilon toxin (NR-4670) (1 µg)

Date: 25 NOV 2015

Signature:

BEI Resources Authentication

ATCC[®], on behalf of BEI Resources, hereby represents and warrants that the material provided under this certificate has been subjected by the contractor to the tests and procedures specified and that the results described, along with any other data provided in this certificate, are true and accurate to the best of ATCC[®]'s knowledge.

ATCC[®] is a trademark of the American Type Culture Collection.

You are authorized to use this product for research use only. It is not intended for human use.

