

***Streptococcus agalactiae*, Strain SGBS021**

**Catalog No. NR-44138**

**Product Description:** *Streptococcus agalactiae* (*S. agalactiae*), strain SGBS021 was isolated in 2007 from the blood of a bacteremia patient in Harris County, Texas, USA.

**Lot<sup>1</sup>: 63780696**

**Manufacturing Date: 21OCT2015**

TEST	SPECIFICATIONS	RESULTS
<b>Phenotypic Analysis</b> Cellular morphology Colony morphology <sup>2</sup>  Motility (wet mount) Hemolysis on blood agar <sup>2</sup> Biochemical tests: Catalase VITEK <sup>®</sup> MS (MALDI-TOF)	Gram-positive cocci Report results  Report results Report results  Negative Consistent with <i>S. agalactiae</i>	Gram-positive cocci Circular, low convex, entire, smooth and white (Figure 1) Non-motile β-hemolytic  Negative Consistent with <i>S. agalactiae</i>
<b>Genotypic Analysis</b> Sequencing of 16S ribosomal RNA gene (~1370 base pairs)	Consistent with <i>S. agalactiae</i>	Consistent with <i>S. agalactiae</i> <sup>3,4</sup>
<b>Purity (post-freeze)<sup>5</sup></b>	Consistent with expected colony morphology	Consistent with expected colony morphology
<b>Viability (post-freeze)<sup>2</sup></b>	Growth	Growth

<sup>1</sup>NR-44138 was produced by inoculation of the deposited material into Todd-Hewitt broth and incubated for 1 day at 37°C in an aerobic atmosphere with 5% CO<sub>2</sub>. Broth inoculum was added to Tryptic Soy agar with 5% defibrinated sheep blood kolles which were grown for 1 day at 37°C in an aerobic atmosphere with 5% CO<sub>2</sub> to produce this lot.

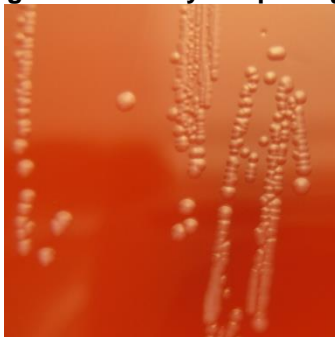
<sup>2</sup>1 day on Tryptic Soy agar with 5% defibrinated sheep blood at 37°C in an aerobic atmosphere with 5% CO<sub>2</sub>

<sup>3</sup>99.9% sequence identity to *S. agalactiae*, strain SGBS021 (GenBank: AUWC01000014 and AUWC01000006)

<sup>4</sup>Also consistent with *Streptococcus difficilis*

<sup>5</sup>Purity of this lot was assessed for 7 days on Tryptic Soy agar with 5% defibrinated sheep blood at 37°C in an aerobic atmosphere with 5% CO<sub>2</sub>.

**Figure 1: Colony Morphology**



**Date:** 15 DEC 2015

**Signature:**



BEI Resources Authentication

ATCC<sup>®</sup>, on behalf of BEI Resources, hereby represents and warrants that the material provided under this certificate has been subjected to the tests and procedures specified and that the results described, along with any other data provided in this certificate, are true and accurate to the best of ATCC<sup>®</sup>'s knowledge.

ATCC<sup>®</sup> is a trademark of the American Type Culture Collection.

You are authorized to use this product for research use only. It is not intended for human use.

