

**Monoclonal Anti-*Mycobacterium tuberculosis* GroEL2 (Gene Rv0440), Clone CS-44 (produced *in vitro*)**

**Catalog No. NR-13813**

This reagent is the tangible property of the U.S. Government.

**Product Description:**

Antibody Designation: CS-44

Monoclonal antibody to *Mycobacterium tuberculosis*, strain H37Rv GroEL2 protein was produced in cell culture using a B cell hybridoma generated by the fusion of myeloma cells with immunized mouse splenocytes.

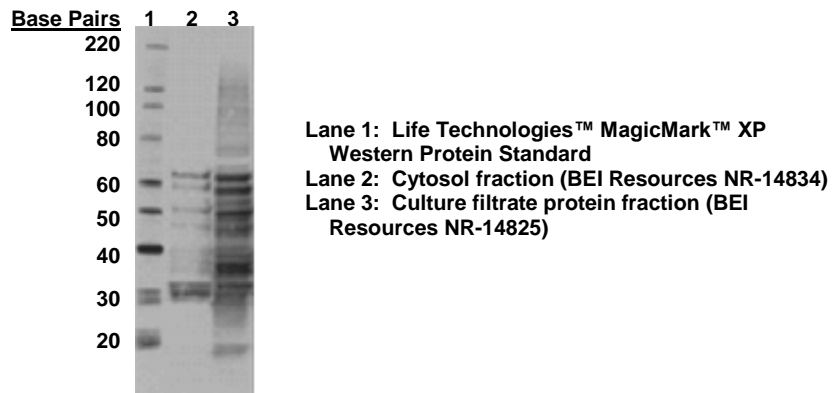
**Lot<sup>1</sup>: 63633192**

**Manufacturing Date: 28AUG2015**

TEST	SPECIFICATIONS	RESULTS
<b>Antibody Class</b>	Report results	IgG <sub>2bκ</sub> > IgG <sub>3κ</sub>
<b>Functional Activity by Western Blot</b> Cytosol fraction (BEI Resources NR-14834) Culture filtrate protein fraction (BEI Resources NR-14825)	Report results Report results	Reactive (Figure 1) Reactive (Figure 1)
<b>Sterility</b>	0.22 μm filter-sterilized	0.22 μm filter-sterilized

Clone CS-44 was created by Colorado State University (CSU) as isotype IgG<sub>2a</sub>. Although BEI Resources was unable to confirm the reported isotype, Western Blot assays completed at ATCC® have shown that the antibody's functional activity is consistent with the results previously provided by CSU.

**Figure 1: Functional Activity by Western Blot**



**Date:** 28 DEC 2015

**Signature:**

BEI Resources Authentication

ATCC®, on behalf of BEI Resources, hereby represents and warrants that the material provided under this certificate has been subjected to the tests and procedures specified and that the results described, along with any other data provided in this certificate, are true and accurate to the best of ATCC®'s knowledge.

ATCC® is a trademark of the American Type Culture Collection.

You are authorized to use this product for research use only. It is not intended for human use.

