

***Streptococcus agalactiae*, Strain SGBS007**

Catalog No. NR-44131

Product Description: *Streptococcus agalactiae* (*S. agalactiae*), strain SGBS007 was isolated in 1997 from the blood of a bacteremia patient in Harris County, Texas, USA.

Lot¹: 63780685

Manufacturing Date: 01OCT2015

TEST	SPECIFICATIONS	RESULTS
Phenotypic Analysis Cellular morphology Colony morphology ² Motility (wet mount) Hemolysis on blood agar ³ Biochemical tests: Catalase VITEK [®] MS (MALDI-TOF)	Gram-positive cocci Report results Report results Report results Negative Consistent with <i>S. agalactiae</i>	Gram-positive cocci Circular, convex, entire, smooth and white (Figure 1) Non-motile β-hemolytic Negative Consistent with <i>S. agalactiae</i>
Genotypic Analysis Sequencing of 16S ribosomal RNA gene (~1470 base pairs)	Consistent with <i>S. agalactiae</i>	Consistent with <i>S. agalactiae</i> ^{4,5}
Purity (post-freeze)⁶	Consistent with expected colony morphology	Consistent with expected colony morphology
Viability (post-freeze)²	Growth	Growth

¹NR-44131 was produced by inoculation of the deposited material into Todd-Hewitt broth and incubated for 1 day at 37°C in an aerobic atmosphere with 5% CO₂. Broth inoculum was added to Tryptic Soy agar with 5% defibrinated sheep blood kolles which were grown for 1 day at 37°C in an aerobic atmosphere with 5% CO₂ to produce this lot.

²1 day on Tryptic Soy agar at 37°C in an aerobic atmosphere with 5% CO₂

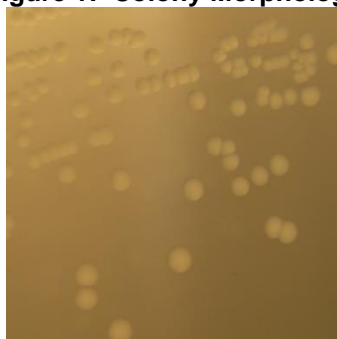
³1 day on Tryptic Soy agar with 5% defibrinated sheep blood at 37°C in an aerobic atmosphere with 5% CO₂

⁴99.9% sequence identity to *S. agalactiae*, strain SGBS007 (GenBank: AUVW01000011.1)

⁵Also consistent with *Streptococcus difficilis*

⁶Purity of this lot was assessed for 7 days on Tryptic Soy agar with 5% defibrinated sheep blood at 37°C in an aerobic atmosphere with 5% CO₂.

Figure 1: Colony Morphology



Date: 06 JAN 2016

Signature:



BEI Resources Authentication

ATCC[®], on behalf of BEI Resources, hereby represents and warrants that the material provided under this certificate has been subjected to the tests and procedures specified and that the results described, along with any other data provided in this certificate, are true and accurate to the best of ATCC[®]'s knowledge.

ATCC[®] is a trademark of the American Type Culture Collection.

You are authorized to use this product for research use only. It is not intended for human use.

