

**MPT32/Apa (Gene Rv1860), Purified Native Protein from *Mycobacterium tuberculosis*, Strain H37Rv****Catalog No. NR-14862**

This reagent is the tangible property of the U.S. Government.

**Product Description:** NR-14862 is a preparation of native MPT32/Apa (Gene Rv1860) purified from irradiated *Mycobacterium tuberculosis*, strain H37Rv culture filtrate protein fraction. The culture filtrate protein fraction was precipitated with 40% ammonium sulfate, applied to a ConA column, eluted, concentrated, dialyzed, applied to a phenyl sepharose column and eluted. The purified MPT32/Apa was dialyzed in 10 mM ammonium bicarbonate.

**Lot: 63356336****Manufacturing Date: 01OCT2015**

Production and QC testing were performed by Colorado State University (CSU). The CSU documentation for lot 15.Rv.2.10.1.45kDa is attached.

ATCC<sup>®</sup>, on behalf of BEI Resources, hereby represents and warrants that the material provided under this certificate has been subjected by the contractor to the tests and procedures specified and that the results described, along with any other data provided in this certificate, are true and accurate to the best of ATCC<sup>®</sup>'s knowledge.

ATCC<sup>®</sup> is a trademark of the American Type Culture Collection.

You are authorized to use this product for research use only. It is not intended for human use.



## WORK SHEET FOR PURIFIED NATIVE PROTEINS

### General Information

BEI Catalog Number: NR-14862  
Product Description: 45kDa Glycoprotein (Mpt32, Apa, Rv1860)  
CSU Lot Number: 15.Rv.2.10.1.45kDa  
Species: *M. tuberculosis*  
Strain: H37Rv

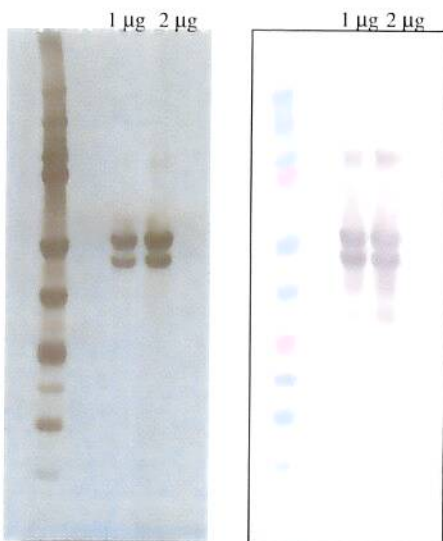
### Purification Information

Starting material: 40% ammonium sulfate cut of CFP (231.8 mg total)  
Starting material (select one):  
 CFP: Filter Sterilized Yes  
 Cells: Irradiated N/A  
Viability Test Performed: N/A  
Protocol used (SOP #'s): PP022.6  
Date started: 9/7/2015  
Date completed: 10/1/2015  
Notebook; page(s): Megan Lucas, BEI Production #2 pg. 63-67  
Additional notes (if applicable): N/A

### Quality Control Information

Clarity of product/suspension after dialysis: clear  
BCA: 3.464  $\mu\text{g}/\mu\text{l}$  Notebook and page(s): MCL, BEI Production #2; pg 67  
Total Protein: 19.75 mg  
Silver Stain Date: 9/30/2015 Notebook and page(s): MCL, BEI Production #2; pg 67  
Western blot Date: 9/30/2015 Antibody used: CS-93  
Notebook and page(s): MCL, BEI Production #2; pg 67  
Mass Spectrometry information/file (if applicable): N/A

### QC Gel and Blot:



### Aliquot Information:

39 x 500  $\mu\text{g}$   
1 x 250  $\mu\text{g}$

Megan Lucas  
(Research Associate)

10/1/15  
(date)

C. Melchapp  
(Laboratory Supervisor)

10/01/15  
(date)