

Genomic RNA from Enterovirus D68, US/IL/14-18952

Catalog No. NR-49136

This reagent is the property of the U.S. Government.

Product Description: Genomic RNA was isolated from a preparation of cell lysate and supernatant from human rhabdomyosarcoma (RD) cells¹ infected with enterovirus D68 (EV-D68), US/IL/14-18952.

Lot²: 63312238

Manufacturing Date: 09SEP2015

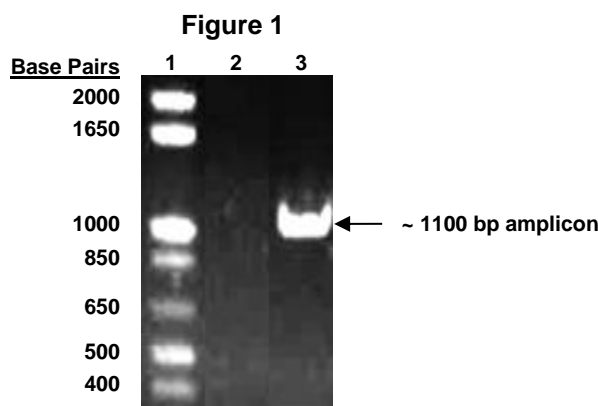
TEST	SPECIFICATIONS	RESULTS
Sequencing of Species-Specific Region VP1 Capsid gene (808 nucleotides)	Consistent with EV-D68, US/IL/14-18952 Consistent with NR-49131	99% identity with EV-D68, US/IL/14-18952 (GenBank: KM851230) Consistent with NR-49131
Functional Activity by RT-PCR Amplification³	~ 1100 bp amplicon	~ 1100 bp amplicon (Figure 1)
Total RNA Content by RiboGreen[®] Measurement (Viral, Cellular and Carrier)	Report results	0.9 ng per 100 µL
Virus Inactivation 10% of total yield inoculated on RD cells ¹ and evaluated for cytopathic effect ⁴	No virus detected	No virus detected

¹RD cells: ATCC[®] CCL-136™

²Nucleic acid was extracted from a preparation of enterovirus D68, US/IL/14-18952 (BEI Resources NR-49131, Lot 63205985), using a QIAamp[®] Viral RNA Mini Kit (Qiagen 52906).

³10 µL of NR-49136 was reverse-transcribed in a 20 µL reaction using iScript™ cDNA Synthesis kit (Bio-Rad 170-8891); 5 µL of cDNA was amplified in a 50 µL reaction using iTaq™ DNA Polymerase (Bio-Rad 170-8870).

⁴Use of the QIAamp[®] Viral RNA Mini Kit has been demonstrated to consistently inactivate 100% of enterovirus as shown by the absence of cytopathic effect (CPE) after plating the entire extract on virus-susceptible cells



Lane 1: Invitrogen™ TrackIt™ 1 Kb Plus DNA Ladder
 Lane 2: Negative control
 Lane 3: NR-49136

Certificate of Analysis for NR-49136

Date: 14 JAN 2016

Signature: 

BEI Resources Authentication

ATCC[®], on behalf of BEI Resources, hereby represents and warrants that the material provided under this certificate has been subjected to the tests and procedures specified and that the results described, along with any other data provided in this certificate, are true and accurate to the best of ATCC[®]'s knowledge.

ATCC[®] is a trademark of the American Type Culture Collection.

You are authorized to use this product for research use only. It is not intended for human use.

