

Vector Containing the Lysosomal Acid Phosphatase Gene Fragment from *Schistosoma haematobium*

Catalog No. NR-49840

This reagent is the tangible property of the U.S. Government.

Product Description: NR-49840 is the lysosomal acid phosphatase (LAP) gene fragment from *Schistosoma haematobium* (*S. haematobium*), cloned into Gateway® Entry Vector pDONR™ 222.

Lot^{1,2}: 63792188

Manufacturing Date: 20JUL2015

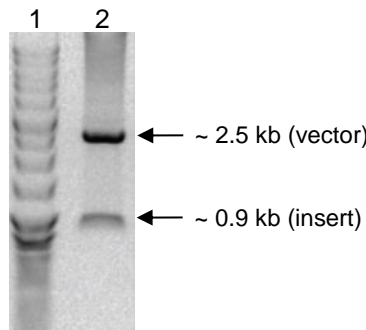
TEST	SPECIFICATIONS	RESULTS
Agarose Gel Electrophoresis Digestion with <i>Bsr</i> G I ³	~ 0.9 kilobase pairs (insert); ~ 2.5 kilobase pairs (vector)	~ 0.9 kilobase pairs; ~ 2.5 kilobase pairs (Figure 1)
OD₂₆₀/OD₂₈₀ Ratio	1.70 to 2.20	1.80

¹QC testing was performed by the Biomedical Research Institute, Rockville, Maryland (NIH-NIAID Contract HHSN2722010000051).

²Plasmid DNA was extracted from overnight bacterial culture in Luria-Bertani (LB) broth with 50 µg/mL kanamycin, using a commercially available kit.

³2 µg of DNA was digested with *Bsr*G I for one hour at 37°C.

Figure 1: Restriction Enzyme Digestion of LAP Gene Fragment



Lane 1: 1 kb ladder

Lane 2: 2 µg of digested vector DNA

Date: 20 JAN 2016

Signature:

BEI Resources Authentication

ATCC®, on behalf of BEI Resources, hereby represents and warrants that the material provided under this certificate has been subjected by the contributor to the tests and procedures specified and that the results described, along with any other data provided in this certificate, are true and accurate to the best of ATCC®'s knowledge.

ATCC® is a trademark of the American Type Culture Collection.

You are authorized to use this product for research use only. It is not intended for human use.

