

**Escherichia coli, Strain Bi8337-41 (Serotype O10:K5:H4)**

**Catalog No. NR-17671**

**Product Description:** *Escherichia coli* (*E. coli*), strain Bi8337-41 (also referred to as ATCC® 23506™) was isolated from human peritoneum.

**Lot<sup>1</sup>: 63849811**

**Manufacturing Date: 20NOV2015**

TEST	SPECIFICATIONS	RESULTS
<b>Phenotypic Analysis</b> Cellular morphology Colony morphologies <sup>2</sup>  Motility (wet mount) VITEK® MS (MALDI-TOF)	Gram-negative rods Report results  Report results Consistent with <i>E. coli</i>	Gram-negative rods Circular, convex, entire, smooth and gray (Figure 1)  Motile Consistent with <i>E. coli</i>
<b>Genotypic Analysis</b> Sequencing of 16S ribosomal RNA gene (~ 1350 base pairs) Riboprinter® Microbial Characterization System	Consistent with <i>E. coli</i> Consistent with <i>E. coli</i>	Consistent with <i>E. coli</i> <sup>3</sup> Consistent with <i>E. coli</i>
<b>Purity (post-freeze)<sup>4</sup></b>	Growth consistent with expected colony morphology	Growth consistent with expected colony morphology
<b>Viability (post-freeze)<sup>2</sup></b>	Growth	Growth

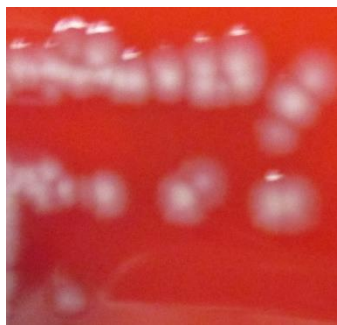
<sup>1</sup>NR-17671 was produced by inoculation of the deposited material into Tryptic Soy broth and grown for 1 day at 37°C in an aerobic atmosphere. Broth inoculum was added to Tryptic Soy agar with 5% defibrinated sheep blood kolles, which were grown for 1 day at 37°C in an aerobic atmosphere to produce this lot.

<sup>2</sup>1 day at 37°C in an aerobic atmosphere on Tryptic Soy agar with 5% defibrinated sheep blood

<sup>3</sup>Also consistent with *Shigella* species

<sup>4</sup>Purity of this lot was assessed for 7 days at 37°C in an aerobic atmosphere on Tryptic Soy agar with 5% defibrinated sheep blood.

**Figure 1: Colony Morphology**



**Date:** 26 JAN 2016

**Signature:**

BEI Resources Authentication

ATCC®, on behalf of BEI Resources, hereby represents and warrants that the material provided under this certificate has been subjected to the tests and procedures specified and that the results described, along with any other data provided in this certificate, are true and accurate to the best of ATCC®'s knowledge.

ATCC® is a trademark of the American Type Culture Collection.

You are authorized to use this product for research use only. It is not intended for human use.

