

**Genomic DNA from *Brucella abortus*, Strain B3196 (NCTC 10504)**

**Catalog No. NR-50052**

**Product Description:** Genomic DNA was extracted from a preparation of *Brucella abortus* (*B. abortus*), strain B3196 (NCTC 10504), biovar 5.

**Lot<sup>1</sup>: 63807275**

**Manufacturing Date: 30JAN2015**

TEST	SPECIFICATIONS	RESULTS
<b>Sequencing of 16S Ribosomal RNA Gene</b> (~ 1390 base pairs)	Consistent with <i>B. abortus</i>	Consistent with <i>B. abortus</i> <sup>2</sup>
<b>Agarose Gel Electrophoresis</b>	High molecular weight chromosomal DNA	High molecular weight chromosomal DNA (Figure 1)
<b>Concentration by PicoGreen<sup>®</sup> Measurement</b>	0.7 to 1.5 µg in 25 to 100 µL per vial	1 µg in 29 µL per vial (34 µg/mL)
<b>Functional Activity by PCR Amplification</b> 16S ribosomal RNA gene	~ 1500 base pair amplicon	~ 1500 base pair amplicon
<b>OD<sub>260</sub>/OD<sub>280</sub> Ratio</b>	1.7 to 2.1	1.6 <sup>3</sup>
<b>Bacterial Inactivation</b> 10% of total yield plated on Tryptic Soy agar with 5% defibrinated sheep blood <sup>4,5</sup>	No viable bacteria detected	No viable bacteria detected

<sup>1</sup>The bacterial preparation used for extraction of genomic DNA was produced by culture of BEI Resources NR-234 (lot 4741463). Genomic DNA was extracted using proprietary technology.

<sup>2</sup>Also consistent with other *Brucella* species

<sup>3</sup>Lot 63807275 did not meet the OD<sub>260</sub>/OD<sub>280</sub> ratio specifications for genomic DNA produced for BEI Resources, however, the integrity gel (Figure 1) shows intact genomic DNA and PCR amplification was successful. An OD<sub>260</sub>/OD<sub>280</sub> ratio of 1.6 may indicate the presence of protein impurities.

<sup>4</sup>9 days at 37°C in an aerobic atmosphere with 5% CO<sub>2</sub>

<sup>5</sup>An extraction procedure was used that has been shown to consistently inactivate 100% of Gram-negative and Gram-positive bacteria.

**Date:** 17 FEB 2016

**Signature:**

BEI Authentication or designee

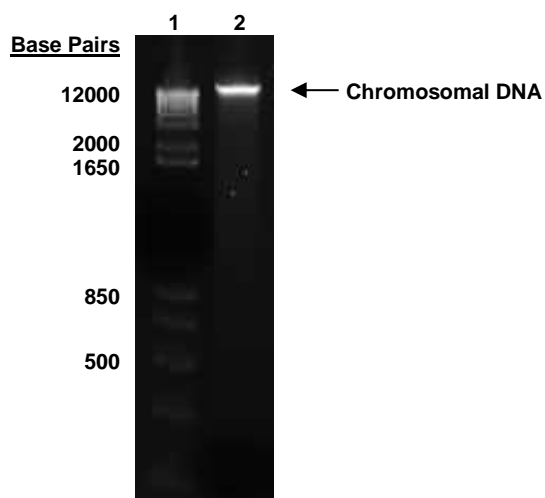
ATCC<sup>®</sup>, on behalf of BEI Resources, hereby represents and warrants that the material provided under this certificate has been subjected to the tests and procedures specified and that the results described, along with any other data provided in this certificate, are true and accurate to the best of ATCC<sup>®</sup>'s knowledge.

ATCC<sup>®</sup> is a trademark of the American Type Culture Collection.

You are authorized to use this product for research use only. It is not intended for human use.



Figure 1: Agarose Gel Electrophoresis



Lane 1: Invitrogen™ TrackIt 1 Kb Plus DNA Ladder™  
Lane 2: 200 ng of NR-50052