

***Clostridium difficile*, Isolate 20110742**

Catalog No. NR-49305

Product Description: *Clostridium difficile* (*C. difficile*; also referred to as *Peptoclostridium difficile*), isolate 20110742 was obtained from the stool of a pediatric male patient with a community-associated (CA) *C. difficile* infection in northeastern USA in 2011. Isolate 20110742 was deposited as PCR ribotype 002, North American pulsed-field gel electrophoresis type 6 (NAP6), containing *tcdA*, *tcdB* and *tcdC* of the PaLoc operon. This isolate is reported to be negative for the *C. difficile* binary toxin (CDT).

Lot¹: 63719843

Manufacturing Date: 18SEP2015

TEST	SPECIFICATIONS	RESULTS
Phenotypic Analysis Cellular morphology Colony morphology ² Hemolysis ² Motility (wet mount) Biochemical tests: Esculin hydrolysis ³ Gelatin hydrolysis ³ VITEK [®] MS (MALDI-TOF)	Gram-positive rods Report results Report results Report results Positive Positive Consistent with <i>C. difficile</i>	Gram-positive rods Irregular, flat, undulate and gray (Figure 1) Non-hemolytic Motile Positive Positive <i>C. difficile</i> (99.9%)
Genotypic Analysis Sequencing of 16S ribosomal RNA gene (~ 1400 base pairs)	> 99% sequence identity to <i>C. difficile</i> type strain	99.9% sequence identity to CP011968.1 (ATCC [®] 9689™)
PCR Assay of Extracted DNA Presence of <i>C. difficile</i> -specific genes ⁴ Triose phosphate isomerase (<i>tpi</i>) Presence of toxin genes ^{4,5} <i>cdtB</i> <i>tcdA</i> (wild type) <i>tcdA</i> (partial deletion) <i>tcdB</i>	~ 230 base pair amplicon No amplicon ~ 370 base pair amplicon No amplicon ~ 160 base pair amplicon	~ 230 base pair amplicon No amplicon ~ 370 base pair amplicon No amplicon ~ 160 base pair amplicon
Purity (post-freeze) Anaerobic growth ⁶ Aerobic growth ⁷	Growth consistent with expected colony morphology No growth	Growth consistent with expected colony morphology No growth
Viability (post-freeze)²	Growth	Growth

¹NR-49305 was produced by inoculation of the deposited material into Modified Reinforced Clostridial medium and incubated for 2 days at 37°C in an anaerobic atmosphere (< 0.5% O₂; Remel™ Anaero Pack-Anaero™ R681001). The material from the initial growth was passaged in Modified Reinforced Clostridial medium for 1 day at 37°C in an anaerobic atmosphere to produce this lot.

²1 day at 37°C in an anaerobic atmosphere on Tryptic Soy agar with 5% defibrinated sheep blood

³Tests were assessed after 7 days at 37°C in an anaerobic atmosphere. The gelatin tube was placed at 4°C for one hour prior to result determination.

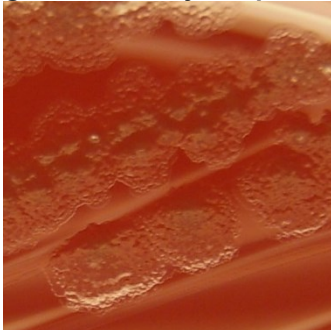
⁴Lemee, L., et al. "Multiplex PCR Targeting *tpi* (Triose Phosphate Isomerase), *tcdA* (Toxin A), and *tcdB* (Toxin B) Genes for Toxigenic Culture of *Clostridium difficile*." *J. Clin. Microbiol.* 42 (2004): 5710-5714. PubMed: 15583303.

⁵Antikainen, J., et al. "Detection of Virulence Genes of *Clostridium difficile* by Multiplex PCR." *APMIS*. 117 (2009): 607-613. PubMed: 19664132.

⁶Purity of this lot was assessed for 7 days at 37°C in an anaerobic atmosphere on Tryptic Soy agar with 5% defibrinated sheep blood.

⁷Purity of this lot was assessed for 7 days at 37°C in an aerobic atmosphere with 5% CO₂ on Tryptic Soy agar with 5% defibrinated sheep blood.

Figure 1: Colony Morphology



Date: 24 FEB 2016

Signature:

A handwritten signature in black ink, appearing to read "David C. Cook". The signature is written in a cursive, flowing style.

BEI Resources Authentication

ATCC[®], on behalf of BEI Resources, hereby represents and warrants that the material provided under this certificate has been subjected to the tests and procedures specified and that the results described, along with any other data provided in this certificate, are true and accurate to the best of ATCC[®]'s knowledge.

ATCC[®] is a trademark of the American Type Culture Collection.

You are authorized to use this product for research use only. It is not intended for human use.

