

***Olsenella uli*, Strain MSTE5**

Catalog No. HM-877

Product Description: *Olsenella uli* (*O. uli*), strain MSTE5 is a human oral isolate.

Lot^{1,2}: 63957282

Manufacturing Date: 01FEB2016

TEST	SPECIFICATIONS	RESULTS
Phenotypic Analysis Cellular morphology Colony morphology ³ Motility (wet mount)	Gram-positive rods Report results Report results	Gram-positive rods Circular, low convex, entire, smooth and cream (Figure 1) Non-motile
Genotypic Analysis Sequencing of 16S ribosomal RNA gene (~ 720 base pairs)	≥ 99% identical to GenBank: JANC01000012.1 (<i>O. uli</i> , strain MSTE5)	≥ 99% identical to GenBank: JANC01000012.1 (<i>O. uli</i> , strain MSTE5)
Purity (post-freeze) Anaerobic atmosphere ⁴ Aerobic atmosphere ⁵	Growth consistent with expected colony morphology No growth	Growth consistent with expected colony morphology No growth
Viability (post-freeze)³	Growth	Growth

¹Quality control of HMP material is only performed to demonstrate that the material distributed by BEI Resources is identical to the deposited material. It should not be considered a complete characterization of the deposited organism.

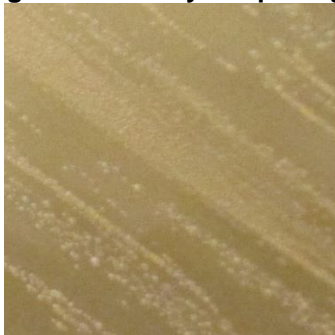
²*O. uli*, strain MSTE5 was deposited by Maria V. Sizova, Ph.D., Department of Biology, Northeastern University, Boston, Massachusetts, USA. The deposited material was inoculated into Peptone Yeast Extract Glucose broth with 0.1% Tween 80 and incubated for 3 days at 37°C in an anaerobic atmosphere (< 5% O₂; Remel™ Pack-Anaero™). The material from the initial growth was passaged once in Peptone Yeast Extract Glucose broth with 0.1% Tween 80 for 3 days at 37°C in an anaerobic atmosphere to produce this lot.

³3 days at 37°C in an anaerobic atmosphere on Peptone Yeast Extract Glucose agar with 0.1% Tween 80

⁴Purity of this lot was assessed for 9 days at 37°C in an anaerobic atmosphere on Peptone Yeast Extract Glucose agar with 0.1% Tween 80.

⁵Purity of this lot was assessed for 9 days at 37°C in an aerobic atmosphere with 5% CO₂ on Tryptic Soy agar with 5% defibrinated sheep blood.

Figure 1: Colony Morphology



Date: 07 MAR 2016

Signature:



BEI Resources Authentication

ATCC[®], on behalf of BEI Resources, hereby represents and warrants that the material provided under this certificate has been subjected to the tests and procedures specified and that the results described, along with any other data provided in this certificate, are true and accurate to the best of ATCC[®]'s knowledge.

ATCC[®] is a trademark of the American Type Culture Collection.
You are authorized to use this product for research use only. It is not intended for human use.

