

Monoclonal Anti-*Francisella tularensis* Intracellular Growth Locus, Subunit D (IglD) Protein, Clone IglD1 (produced *in vitro*)

Catalog No. NR-9362

Product Description: Antibody Class: IgG1

Mouse monoclonal antibody specific to a histidine-tagged recombinant form of the intracellular growth locus, subunit D protein (IglD) of *Francisella tularensis* (*F. tularensis*) was produced *in vitro*.

Lot¹: 57881638

Manufacturing Date: 10AUG2007

TEST	SPECIFICATIONS	RESULTS
Estimated Monoclonal Antibody Concentration ²	Report results	0.5 to 2 mg/mL
Functional Activity Western blot using whole cell antigen (Figure 1) ^{3,4} <i>F. tularensis</i> wild type (WT) <i>F. tularensis</i> Δ iglD mutant ELISA titer <i>F. tularensis</i> WT Indirect fluorescent antibody assay <i>F. tularensis</i> WT, methanol-treated <i>F. tularensis</i> WT, formaldehyde-treated	Reactive Not reactive Report results Report results Report results	Reactive Not reactive 1:64000 Fluorescence observed Fluorescence observed

¹Produced using a two-compartment disposable bioreactor (CELLine CL 1000) from INTEGRA Biosciences.

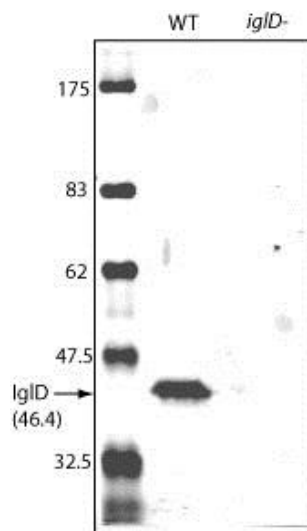
²In a background of Dulbecco's Modified Eagle's Medium supplemented with 5% fetal bovine serum.

³Visualized using a LI-COR[®] Biosciences Odyssey[®] Infrared Imaging System.

⁴Dilutions of NR-9362 between 1:200 and 1:1000 are recommended.

Figure 1

Anti-FT IglD



Certificate of Analysis for NR-9362

Date: 22 APR 2014

Signature: 

Title: Technical Manager, BEI Authentication or designee

ATCC[®], on behalf of BEI Resources, hereby represents and warrants that the material provided under this certificate has been subjected by the depositor to the tests and procedures specified and that the results described, along with any other data provided in this certificate, are true and accurate to the best of ATCC[®]'s knowledge.

ATCC[®] is a trademark of the American Type Culture Collection.
You are authorized to use this product for research use only. It is not intended for human use.

