

***Bartonella quintana*, Strain JK-73**

**Catalog No. NR-44418**

**Product Description:** *Bartonella quintana* (*B. quintana*), strain JK-73 was isolated in March 2013 from the blood of an AIDS patient in San Francisco, California, USA, who presented with bacillary angiomatosis of the skin.

**Lot<sup>1</sup>: 63950642**

**Manufacturing Date: 15MAR2016**

TEST	SPECIFICATIONS	RESULTS
<b>Phenotypic Analysis</b> Cellular morphology Colony morphology <sup>2</sup>  Motility (wet mount) Biochemical tests: Catalase Oxidase	Gram-negative rod Report results  Report results  Negative Negative	Gram-negative rod Circular, convex, entire, smooth and gray (Figure 1) Motile  Negative Negative
<b>Genotypic Analysis</b> Sequencing of 16S ribosomal RNA gene (~ 860 base pairs)	≥ 99% sequence identity to <i>B. quintana</i> , strain JK-73 (GenBank: AZZX01000001.1)	99.9% sequence identity to <i>B. quintana</i> , strain JK-73 (GenBank: AZZX01000001.1) <sup>3</sup>
<b>Purity (post-freeze)<sup>4</sup></b>	Consistent with expected colony morphology	Consistent with expected colony morphology
<b>Viability (post-freeze)<sup>2</sup></b>	Growth	Growth

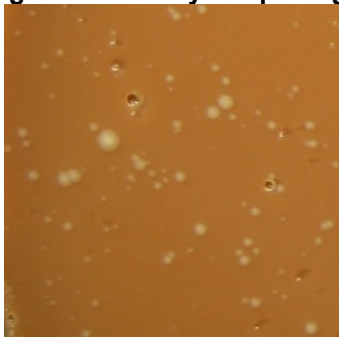
<sup>1</sup>NR-44418 was produced by inoculation of the deposited material into Brain Heart Infusion broth. Broth inoculum was added to Chocolate broth and grown for 7 days at 35°C in an aerobic atmosphere with 5% CO<sub>2</sub>. Chocolate broth inoculum was used to inoculate Chocolate agar kolles, which were grown for 7 days at 37°C in an aerobic atmosphere with 5% CO<sub>2</sub> to produce this lot.

<sup>2</sup>6 days on Chocolate agar at 37°C in an aerobic atmosphere with 5% CO<sub>2</sub>

<sup>3</sup>Also consistent with other *Bartonella* species

<sup>4</sup>Purity of this lot was assessed for 7 days on Tryptic Soy with 5% defibrinated sheep blood agar at 37°C in an aerobic atmosphere with 5% CO<sub>2</sub>.

**Figure 1: Colony Morphology**



**Date:** 04 MAY 2016

**Signature:** 

**BEI Resources Authentication**

ATCC®, on behalf of BEI Resources, hereby represents and warrants that the material provided under this certificate has been subjected to the tests and procedures specified and that the results described, along with any other data provided in this certificate, are true and accurate to the best of ATCC®'s knowledge.

ATCC® is a trademark of the American Type Culture Collection.

You are authorized to use this product for research use only. It is not intended for human use.

