

***Bartonella quintana*, Strain JK56**

**Catalog No. NR-31830**

**Product Description:** *Bartonella quintana* (*B. quintana*), strain JK56 was isolated in May 1995 from the blood of a patient in San Francisco, California, USA, who presented with bacillary angiomatosis subcutaneous nodules.

**Lot<sup>1</sup>: 63950572**

**Manufacturing Date: 24MAR2016**

TEST	SPECIFICATIONS	RESULTS
<b>Phenotypic Analysis</b> Cellular morphology Colony morphology <sup>2</sup>  Motility (wet mount) Biochemical tests: Catalase Oxidase	Gram-negative rods Report results  Report results  Negative Negative	Gram-negative rods Circular, low convex, entire, smooth and cream (Figure 1) Motile  Negative Negative
<b>Genotypic Analysis</b> Sequencing of 16S ribosomal RNA gene (~ 850 base pairs)	≥ 99% sequence identity to <i>B. quintana</i> , strain JK56 (GenBank: AHPE01000012.1)	99.9% sequence identity to <i>B. quintana</i> , strain JK56 (GenBank: AHPE01000012.1) <sup>3</sup>
<b>Purity (post-freeze)<sup>4</sup></b>	Consistent with expected colony morphology	Consistent with expected colony morphology
<b>Viability (post-freeze)<sup>2</sup></b>	Growth	Growth

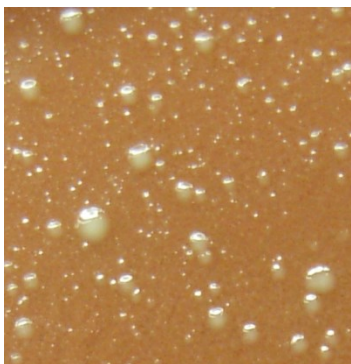
<sup>1</sup>NR-31830 was produced by inoculation of the deposited material into Brain Heart Infusion broth. Broth inoculum was added to Chocolate agar and grown for 10 days at 37°C in an aerobic atmosphere with 5% CO<sub>2</sub>. A loopful of colonies from the Chocolate agar growth was suspended in Heart Infusion broth and used to inoculate Chocolate agar kolles, which were grown for 7 days at 37°C in an aerobic atmosphere with 5% CO<sub>2</sub> to produce this lot.

<sup>2</sup>8 days at 37°C in an aerobic atmosphere with 5% CO<sub>2</sub> on Chocolate agar

<sup>3</sup>Also consistent with other *Bartonella* species

<sup>4</sup>Purity of this lot was assessed for 8 days at 37°C in an aerobic atmosphere with 5% CO<sub>2</sub> on Tryptic Soy agar with 5% defibrinated sheep blood.

**Figure 1: Colony Morphology**



**Date:** 09 MAY 2016

**Signature:**



**BEI Resources Authentication**

ATCC®, on behalf of BEI Resources, hereby represents and warrants that the material provided under this certificate has been subjected to the tests and procedures specified and that the results described, along with any other data provided in this certificate, are true and accurate to the best of ATCC®'s knowledge.

ATCC® is a trademark of the American Type Culture Collection.

You are authorized to use this product for research use only. It is not intended for human use.

