

**Genomic DNA from *Yersinia pestis*, Strain Harbin 35**

**Catalog No. NR-2719**

This reagent is the property of the U.S. Government.

**Product Description:** NR-2719 contains genomic DNA extracted from a preparation of *Yersinia pestis* (*Y. pestis*), strain Harbin 35.

**Lot<sup>1</sup>: 63344343**

**Manufacturing Date: 30MAR2015**

TEST	SPECIFICATIONS	RESULTS
<b>Sequencing of 16S Ribosomal RNA Gene</b> (~ 770 base pairs)	≥ 99% sequence identity to <i>Y. pestis</i> type strain (GenBank: AF36683)	99.9% sequence identity to <i>Y. pestis</i> type strain (GenBank: AF36683)
<b>Presence of Plasmids Confirmed by PCR Amplification<sup>2</sup></b> pMT1/pFra pCD1/pYV pPCP1/pPla/pPst	~ 1200 base pair amplicon ~ 1900 base pair amplicon ~ 400 base pair amplicon	~ 1200 base pair amplicon ~ 1900 base pair amplicon ~ 400 base pair amplicon
<b>Agarose Gel Electrophoresis</b>	High molecular weight chromosomal DNA	High molecular weight chromosomal DNA (Figure 1)
<b>Concentration by PicoGreen<sup>®</sup> Measurement</b>	0.7 to 1.5 µg in 25 to 100 µL per vial	0.99 µg in 28 µL per vial (35 µg/mL)
<b>Functional Activity by PCR Amplification</b> 16S ribosomal RNA gene	> 1500 base pair amplicon	~ 1500 base pair amplicon
<b>OD<sub>260</sub>/OD<sub>280</sub> Ratio</b>	1.7 to 2.1	1.8
<b>Bacterial Inactivation</b> 10% of total yield plated on Tryptic Soy agar <sup>3</sup>	No viable bacteria detected	No viable bacteria detected

<sup>1</sup>The bacterial preparation used for extraction of genomic DNA was produced by culture of BEI Resources NR-639 (Lot: 4464629). Genomic DNA was extracted using proprietary technology.

<sup>2</sup>PCR was performed on NR-2719 lot 60093006, which was produced from the same lot of organism (NR-639 lot 4464629) as this lot.

<sup>3</sup>An extraction procedure was used that has been shown to consistently inactivate 100% of Gram-negative and Gram-positive bacteria.

**Date:** 12 MAY 2016

**Signature:**

BEI Authentication or designee

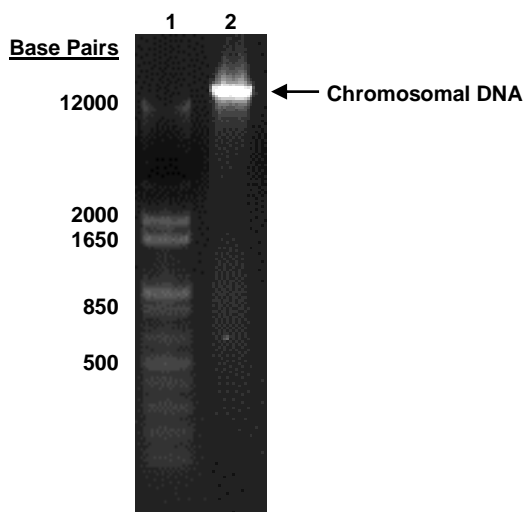
ATCC<sup>®</sup>, on behalf of BEI Resources, hereby represents and warrants that the material provided under this certificate has been subjected to the tests and procedures specified and that the results described, along with any other data provided in this certificate, are true and accurate to the best of ATCC<sup>®</sup>'s knowledge.

ATCC<sup>®</sup> is a trademark of the American Type Culture Collection.

You are authorized to use this product for research use only. It is not intended for human use.



**Figure 1: Agarose Gel Electrophoresis of Genomic DNA  
Extracted from a Preparation of *Y. pestis*, Strain Harbin 35**



Lane 1: Invitrogen™ TrackIt 1 Kb Plus DNA Ladder™  
Lane 2: 352 ng of NR-2719