

Genomic DNA from *Francisella tularensis* subsp. *holarctica*, Strain OR96-0246

Catalog No. NR-3020

This reagent is the property of the U.S. Government.

Product Description: Genomic DNA was isolated from a preparation of *Francisella tularensis* (*F. tularensis*) subsp. *holarctica*, strain OR96-0246.

Lot¹: 63344341

Manufacturing Date: 30MAR2015

TEST	SPECIFICATIONS	RESULTS
Sequencing of 16S Ribosomal RNA Gene (~ 1470 base pairs)	≥ 99% sequence identity to <i>F. tularensis</i> subsp. <i>holarctica</i> , strain OR96-0246 (GenBank: CP011488)	100% sequence identity to <i>F. tularensis</i> subsp. <i>holarctica</i> , strain OR96-0246 (GenBank: CP011488)
Molecular Subtyping by PCR Amplification of Subspecies-Specific Sequence² subsp. <i>tularensis</i> subsp. <i>holarctica</i>	~ 390 base pair amplicon ~ 1250 base pair amplicon	No amplicon ~ 1250 base pair amplicon
Agarose Gel Electrophoresis	High molecular weight chromosomal DNA	High molecular weight chromosomal DNA (Figure 1)
Concentration by PicoGreen[®] Measurement	0.7 to 1.5 µg in 25 to 100 µL per vial	1 µg in 31 µL per vial (0.03 µg/µL)
Functional Activity by PCR Amplification 16S ribosomal RNA gene	~ 1500 base pair amplicon	~ 1500 base pair amplicon
OD₂₆₀/OD₂₈₀ Ratio	1.7 to 2.1	1.8
Bacterial Inactivation 10% of total yield plated on agar ³	No viable bacteria detected	No viable bacteria detected

¹The bacterial preparation used for extraction of genomic DNA was produced from NR-648 (Lot 4324771). Genomic DNA was extracted using proprietary technology.

²PCR was performed on NR-3020 lot 7513130, which was produced from the depositor material.

³An extraction procedure was used that has been shown to consistently inactivate 100% of Gram-positive and Gram-negative bacteria.

Date: 20 JUN 2016

Signature:



BEI Resources Authentication

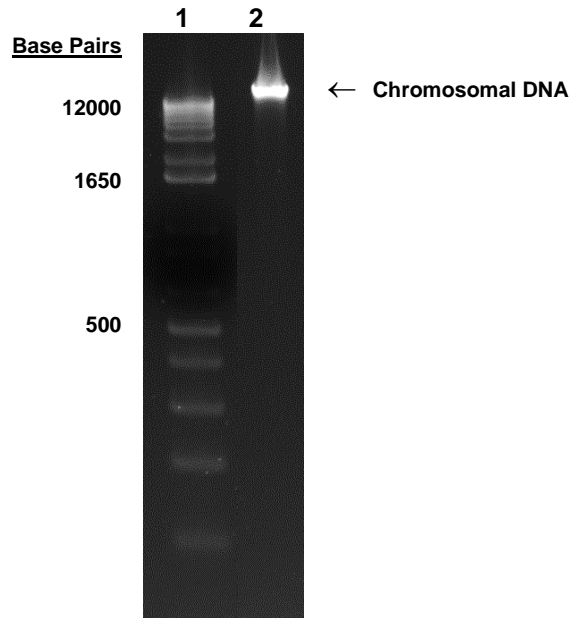
ATCC[®], on behalf of BEI Resources, hereby represents and warrants that the material provided under this certificate has been subjected to the tests and procedures specified and that the results described, along with any other data provided in this certificate, are true and accurate to the best of ATCC[®]'s knowledge.

ATCC[®] is a trademark of the American Type Culture Collection.

You are authorized to use this product for research use only. It is not intended for human use.



Figure 1: Agarose Gel Electrophoresis



Lane 1: Invitrogen™ TrackIt™ 1 Kb Plus DNA Ladder
Lane 2: 200 ng of NR-3020