

Enterococcus faecium, Strain E4389

Catalog No. NR-31967

Product Description: *Enterococcus faecium* (*E. faecium*), strain E4389 was isolated in 2008 from dog feces in Denmark.

Lot¹: 64220052

Manufacturing Date: 27APR2016

TEST	SPECIFICATIONS	RESULTS
Phenotypic Analysis Cellular morphology Colony morphology ² Motility (wet mount) Hemolysis ³ VITEK [®] MS (MALDI-TOF)	Gram-positive cocci Report results Report results Report results <i>E. faecium</i>	Gram-positive cocci Circular, convex, entire, smooth and cream (Figure 1) Non-motile Non-hemolytic <i>E. faecium</i> (99.9%)
Antibiotic Susceptibility Profile Etest [®] antibiotic test strips ⁴ Ampicillin ⁵	Report results	Resistant ($\geq 256 \mu\text{g/mL}$)
Genotypic Analysis Sequencing of 16S ribosomal RNA gene (1450 base pairs)	$\geq 99\%$ sequence identity to <i>E. faecium</i> , strain E4389 (GenBank: AHYJ01000001.1)	99.7% sequence identity to <i>E. faecium</i> , strain E4389 (GenBank: AHYJ01000001.1)
Purity (post-freeze)⁶	Consistent with expected colony morphology	Consistent with expected colony morphology
Viability (post-freeze)²	Growth	Growth

¹NR-31967 was produced by inoculation of the deposited material into Tryptic Soy broth and incubated for 1 day at 37°C in an aerobic atmosphere.

Broth inoculum was added to Tryptic Soy agar kolles, which were grown for 1 day at 37°C in an aerobic atmosphere to produce this lot.

²1 day at 37°C in an aerobic atmosphere on Tryptic Soy agar

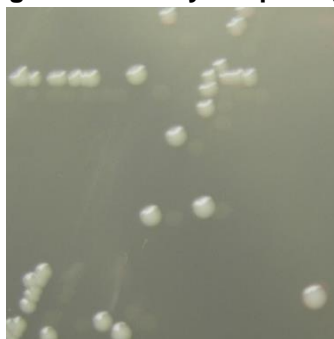
³1 day at 37°C in an aerobic atmosphere on Tryptic Soy agar with 5% defibrinated sheep blood

⁴1 day at 37°C in an aerobic atmosphere on Mueller Hinton agar

⁵For ampicillin (bioMérieux Etest[®] 412252), a MIC $\leq 8 \mu\text{g/mL}$ is sensitive and a MIC $\geq 16 \mu\text{g/mL}$ is resistant.

⁶Purity of this lot was assessed for 7 days at 37°C in an aerobic atmosphere on Tryptic Soy agar.

Figure 1: Colony Morphology



Date: 22 JUN 2016

Signature:



BEI Resources Authentication

ATCC[®], on behalf of BEI Resources, hereby represents and warrants that the material provided under this certificate has been subjected to the tests and procedures specified and that the results described, along with any other data provided in this certificate, are true and accurate to the best of ATCC[®]'s knowledge.

ATCC[®] is a trademark of the American Type Culture Collection.

You are authorized to use this product for research use only. It is not intended for human use.

