

**Genomic DNA from *Burkholderia pseudomallei*, Strain 286 (MP-S, NBL 121)**

**Catalog No. NR-50097**

**Product Description:** Genomic DNA was extracted from a preparation of *Burkholderia pseudomallei* (*B. pseudomallei*), strain 286. *B. pseudomallei*, strain 286 was isolated in 1953 from a human with chronic melioidosis in Louisiana, having evidence of infection acquired while living in the Far East.

**Lot<sup>1</sup>: 63967524**

**Manufacturing Date: 11AUG2015**

TEST	SPECIFICATIONS	RESULTS
<b>Genotypic Analysis</b> Sequencing of 16S ribosomal RNA gene (~ 870 base pairs)	≥ 99% sequence identity to <i>B. pseudomallei</i> , strain 286 (GenBank: CWJA01000021) Consistent with <i>B. pseudomallei</i> (C at position 75) <sup>2</sup>	99.9% sequence identity to <i>B. pseudomallei</i> , strain 286 (GenBank: CWJA01000021) Consistent with <i>B. pseudomallei</i> (C at position 75) <sup>2</sup>
<b>Agarose Gel Electrophoresis</b>	High molecular weight chromosomal DNA	High molecular weight chromosomal DNA (Figure 1)
<b>Concentration by PicoGreen<sup>®</sup> Measurement</b>	0.7 to 1.5 µg in 25 to 100 µL per vial	0.9 µg in 26 µL per vial (36 µg/mL)
<b>Functional Activity by PCR Amplification</b> 16S ribosomal RNA gene	~ 1500 base pair amplicon	~ 1500 base pair amplicon
<b>OD<sub>260</sub>/OD<sub>280</sub> Ratio</b>	1.7 to 2.1	1.9
<b>Bacterial Inactivation</b> 10% of total yield plated on Tryptic Soy agar <sup>3</sup>	No viable bacteria detected	No viable bacteria detected

<sup>1</sup>The bacterial preparation used for extraction of genomic DNA was produced from a culture of NR-26 (Lot 4737956). Genomic DNA was extracted using proprietary technology.

<sup>2</sup>Gee, J. E., et al. "Use of 16S rRNA Gene Sequencing for Rapid Identification and Differentiation of *Burkholderia pseudomallei* and *B. mallei*". *J. Clin. Microbiol.* 10 (2003): 4647-4654. PubMed: 14532197.

<sup>3</sup>An extraction procedure was used that has been shown to consistently inactivate 100% of Gram-negative and Gram-positive bacteria.

**Date:** 23 JUN 2016

**Signature:**

BEI Authentication or designee

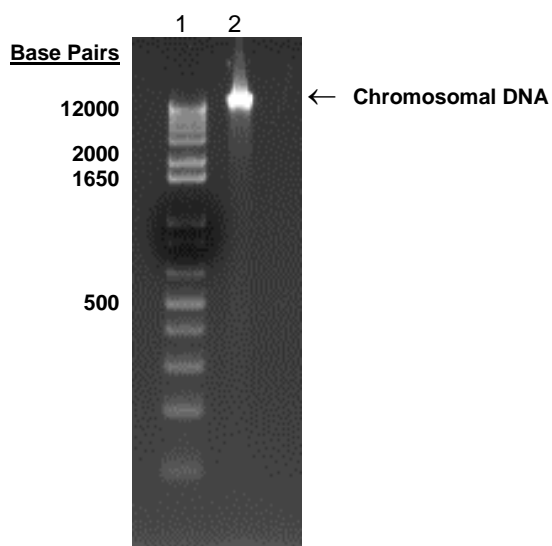
ATCC<sup>®</sup>, on behalf of BEI Resources, hereby represents and warrants that the material provided under this certificate has been subjected to the tests and procedures specified and that the results described, along with any other data provided in this certificate, are true and accurate to the best of ATCC<sup>®</sup>'s knowledge.

ATCC<sup>®</sup> is a trademark of the American Type Culture Collection.

You are authorized to use this product for research use only. It is not intended for human use.



Figure 1: Agarose Gel Electrophoresis



Lane 1: Invitrogen™ TrackIt 1 Kb Plus DNA Ladder™  
Lane 2: 200 ng of NR-50097