

Genomic DNA from *Burkholderia pseudomallei*, Strain Pasteur 6068

Catalog No. NR-8216

Product Description: Genomic DNA was isolated from a preparation of *Burkholderia pseudomallei* (*B. pseudomallei*), strain Pasteur 6068. *B. pseudomallei* (formerly *Pseudomonas pseudomallei*), strain Pasteur 6068 was isolated in Vietnam between 1964 and 1967 and was part of the Finkelstein collection.

Lot¹: 63344333

Manufacturing Date: 05MAY2015

TEST	SPECIFICATIONS	RESULTS
Sequencing of 16S Ribosomal RNA Gene (~ 1460 base pairs)	≥ 99% sequence identity to <i>B. pseudomallei</i> , type strain ATCC® 23343™ (GenBank: DQ108392.1)	99.9% sequence identity to <i>B. pseudomallei</i> , type strain ATCC® 23343™ (GenBank: DQ108392.1)
Agarose Gel Electrophoresis	High molecular weight chromosomal DNA	High molecular weight chromosomal DNA (Figure 1)
Concentration by PicoGreen® Measurement	≥ 0.7 µg to ≤ 1.5 µg in 25 to 100 µL per vial	0.9 µg in 32.8 µL per vial (27.9 µg/mL)
Functional Activity by PCR Amplification 16S ribosomal RNA gene	~ 1500 base pair amplicon	~ 1500 base pair amplicon
OD₂₆₀/OD₂₈₀ Ratio	1.7 to 2.1	1.9
Bacterial Inactivation 10% of total yield plated on agar ²	No viable bacteria detected	No viable bacteria detected

¹The bacterial preparation used for extraction of genomic DNA was produced by culture of BEI Resources NR-8069 (Lot: 57983887). Genomic DNA was extracted using proprietary technology.

²An extraction procedure was used that has been shown to consistently inactivate 100% of Gram-negative and Gram-positive bacteria.

Date: 30 JUN 2016

Signature: 

BEI Resources Authentication

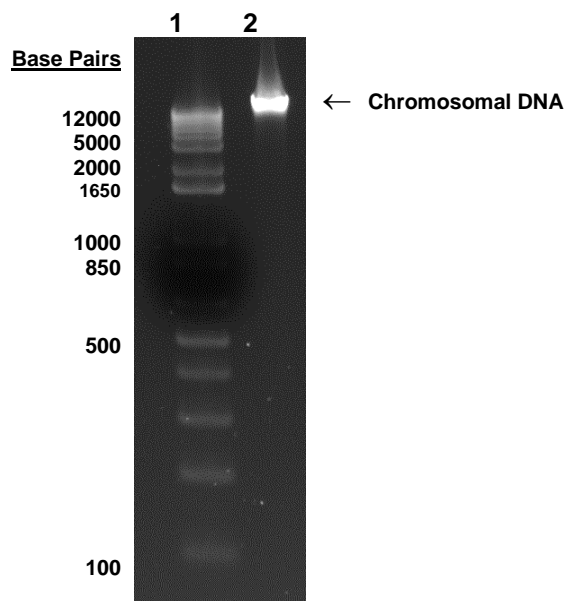
ATCC®, on behalf of BEI Resources, hereby represents and warrants that the material provided under this certificate has been subjected to the tests and procedures specified and that the results described, along with any other data provided in this certificate, are true and accurate to the best of ATCC®'s knowledge.

ATCC® is a trademark of the American Type Culture Collection.

You are authorized to use this product for research use only. It is not intended for human use.



Figure 1: Gel Electrophoresis



Lane 1: Invitrogen™ TrackIt™ 1 Kb Plus DNA Ladder
Lane 2: 200 ng of NR-8216