

**Polyclonal Anti-*Mycobacterium tuberculosis*, Strain H37Rv Live Infection (antiserum, Guinea Pig)****Catalog No. NR-13823**

This reagent is the tangible property of the U.S. Government.

**Product Description:** Polyclonal antiserum to a live infection of *Mycobacterium tuberculosis*, strain H37Rv was produced in Guinea pigs. The antiserum is reported to be active in ELISA and Western Blot assays.

**Lot: 63410796****Manufacturing Date: 25APR2016**

Production and QC testing were performed by Colorado State University (CSU). The CSU documentation for lot 16.Rv.04.05.gp is attached.

ATCC®, on behalf of BEI Resources, hereby represents and warrants that the material provided under this certificate has been subjected by the contractor to the tests and procedures specified and that the results described, along with any other data provided in this certificate, are true and accurate to the best of ATCC®'s knowledge.

ATCC® is a trademark of the American Type Culture Collection.

You are authorized to use this product for research use only. It is not intended for human use.



### Work Sheet for Antibodies

#### General Information:

BEI Catalog Number: NR-13823  
Product Description: Guinea Pig Polyclonal Antibody against H37Rv Live Infection  
CSU Lot Number: 16.Rv.04.05.gp  
Species: *Mycobacterium tuberculosis*  
Strain: H37Rv  
Type (select one):  Mouse Monoclonal  
 Rabbit Polyclonal  
 Guinea Pig Polyclonal

#### Production Information:

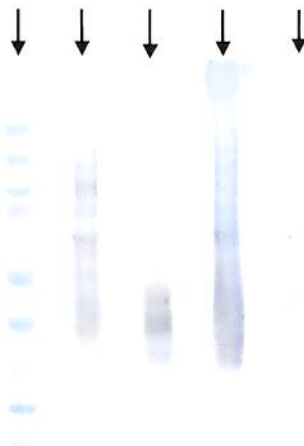
Cell Line: N/A SOP#: N/A Notebook/pp: N/A  
Amount of CS Harvested:   N/A   Clarity: N/A  
IgG Purification:   N/A   SOP#:   N/A   Notebook/pp:           N/A          

#### QC Information:

Tested Against:   subcellular fractions                   SOP#: AB102 Notebook/pp:   Keri Wright, Antibodies Y3-Y6, pg 100    
Tested by: Western blot:   X   Titer:   1:1000    
                  ELISA:   N/A   Titer:   N/A    
Special Instructions: N/A

#### QC Western blot:

- 1. Protein Standard
- 2. Cyt
- 3. CFP
- 4. MEM
- 5. CW



Aliquot Information:   62 x .25 ml  

  Keri Wright    
(Research Associate) (date)   6/28/16  

  O. Hehapp    
(Laboratory Supervisor) (date)   6/28/16