

Enterococcus faecium, Strain E2883

Catalog No. NR-31955

Product Description: *Enterococcus faecium* (*E. faecium*), strain E2883 was isolated in 2002 from the blood of a hospitalized patient in the Netherlands.

Lot¹: 64220048

Manufacturing Date: 27APR2016

TEST	SPECIFICATIONS	RESULTS
Phenotypic Analysis Cellular morphology Colony morphology ² Motility (wet mount) Hemolysis ² VITEK [®] MS (MALDI-TOF)	Gram-positive cocci Report results Report results Report results <i>E. faecium</i>	Gram-positive cocci Circular, low convex, entire, smooth and gray (Figure 1) Non-motile α-hemolytic <i>E. faecium</i> (99.9%)
Antibiotic Susceptibility Profile Etest [®] antibiotic test strips ³ Ampicillin ⁴	Resistant	Resistant (≥ 16 µg/mL)
Genotypic Analysis Sequencing of 16S ribosomal RNA gene (~ 840 base pairs)	≥ 99% sequence identity to <i>E. faecium</i> , strain E2883 (GenBank: AHXX01000026.1)	99.9% sequence identity to <i>E. faecium</i> , strain E2883 (GenBank: AHXX01000026.1)
Purity (post-freeze)⁵	Growth consistent with expected colony morphology	Growth consistent with expected colony morphology
Viability (post-freeze)²	Growth	Growth

¹NR-31955 was produced by inoculation of the deposited material into Tryptic Soy broth and incubated for 1 day at 37°C in an aerobic atmosphere. Broth inoculum was added to Tryptic Soy agar with 5% defibrinated sheep blood kolles, which were grown for 1 day at 37°C in an aerobic atmosphere to produce this lot.

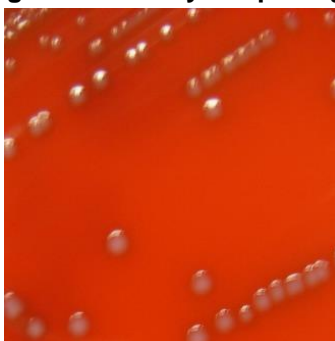
²1 day at 37°C in an aerobic atmosphere on Tryptic Soy agar with 5% defibrinated sheep blood.

³1 day at 37°C in an aerobic atmosphere on Mueller Hinton agar

⁴For ampicillin (bioMérieux Etest[®] 412252), a MIC ≤ 8 µg/mL is sensitive and a MIC ≥ 16 µg/mL is resistant.

⁵Purity of this lot was assessed for 7 days at 37°C in an aerobic atmosphere on Tryptic Soy agar with 5% defibrinated sheep blood.

Figure 1: Colony Morphology



Date: 13 JUL 2016

Signature:



BEI Resources Authentication

ATCC®, on behalf of BEI Resources, hereby represents and warrants that the material provided under this certificate has been subjected to the tests and procedures specified and that the results described, along with any other data provided in this certificate, are true and accurate to the best of ATCC®'s knowledge.

ATCC® is a trademark of the American Type Culture Collection.

You are authorized to use this product for research use only. It is not intended for human use.

