

Monoclonal Anti-*Mycobacterium tuberculosis* LAM, Clone CS-40 (produced *in vitro*)

Catalog No. NR-13812

This reagent is the tangible property of the U.S. Government.

Product Description:

Antibody Class: IgG_{1κ}

Antibody Designation: CS-40

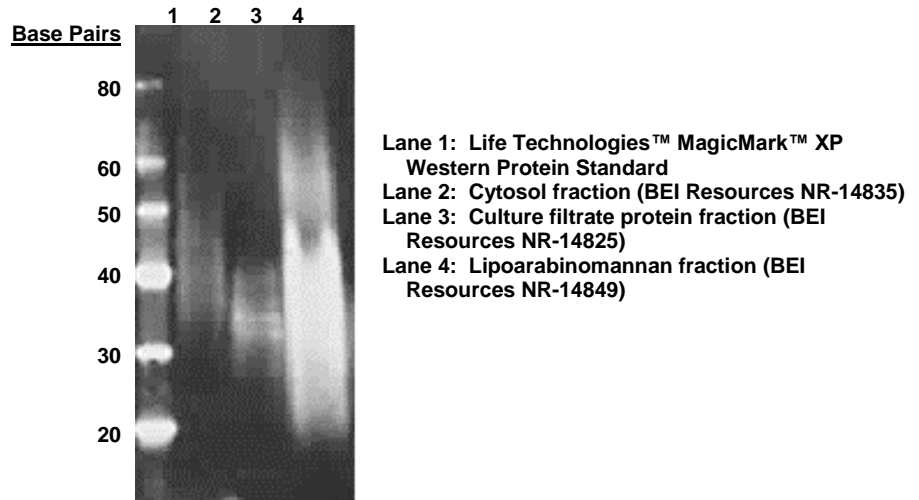
Monoclonal antibody to *Mycobacterium tuberculosis*, strain H37Rv lipoarabinomannan (LAM), clone CS-40 was produced in cell culture using a B cell hybridoma generated by the fusion of myeloma cells with immunized mouse splenocytes.

Lot: 64057083

Manufacturing Date: 13MAY2016

TEST	SPECIFICATIONS	RESULTS
Antibody Class	Report results	IgG _{1κ}
Functional Activity by Western Blot Cytosol fraction (BEI Resources NR-14835) Culture filtrate protein fraction (BEI Resources NR-14825)	Report results Report results	Reactive (Figure 1) Reactive (Figure 1)
Sterility	0.22 μm filter-sterilized	0.22 μm filter-sterilized

Figure 1: Functional Activity by Western Blot



Date: 29 JUL 2016

Signature:

BEI Resources Authentication

ATCC®, on behalf of BEI Resources, hereby represents and warrants that the material provided under this certificate has been subjected to the tests and procedures specified and that the results described, along with any other data provided in this certificate, are true and accurate to the best of ATCC®'s knowledge.

ATCC® is a trademark of the American Type Culture Collection.

You are authorized to use this product for research use only. It is not intended for human use.

