

Monoclonal Anti-Flavivirus Group Antigen, Clone D1-4G2-4-15 (produced *in vitro*)

Catalog No. NR-50327

Product Description: Antibody Class: **IgG1 κ , IgG2 α ¹**

Mouse monoclonal antibody prepared against the group antigen of flaviviruses was purified from clone D1-4G2-4-15 hybridoma supernatant by protein G affinity chromatography.

Lot: 64202788

Manufacturing Date: 11MAY2016

TEST	SPECIFICATIONS	RESULTS
Antibody Class Determination	Report results	IgG1 κ , IgG2 α ¹
Experion Pro260 Analysis	Correct molecular weight (MW) for heavy and light chains Report results	Correct MW for heavy and light chains (Figure 1) 84.0% pure ²
Concentration by Spectrophotometer at OD ₂₈₀	Report results	1.2 mg per mL
Functional Activity by Indirect Fluorescent Antibody Assay Dengue virus type 2 (DEN-2) ³ Dengue virus type 3 (DEN-3) ⁴ West Nile virus (WNV) ⁵ Yellow fever virus (YFV) ⁶ Zika virus (ZIKV) ⁷	Report results Report results Report results Report results Report results	Fluorescence observed Fluorescence observed Fluorescence observed Fluorescence observed Fluorescence observed
Sterility	0.22 μ m filter-sterilized	0.22 μ m filter-sterilized

¹The clone D1-4G2-4-15 hybridoma was generated using the P3X63Ag8 myeloma fusion partner; P3X63Ag8 secretes the MOPC21 protein, an IgG1 κ antibody of unknown specificity. Thus, NR-50327 contains both MOPC21 protein and Flavivirus group-specific antibody of the IgG2 α isotype.

²The purity estimated from the peaks representing the correct MW for heavy and light chains may be an underestimate owing to incomplete denaturation of the sample.

³Using DEN-2, New Guinea C (BEI Resources NR-84)-infected LLC-MK2 Derivative cells (ATCC[®] CCL-7.1[™]) and DEN-2, C 0590-94 (BEI Resources NR-49746)-infected C6/36 cells (ATCC[®] CRL-1660[™]) and 1:100 and 1:300 dilutions of NR-50327

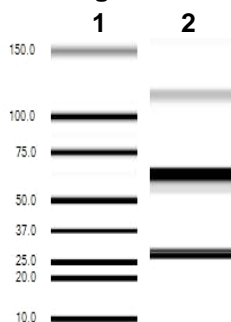
⁴Using DEN-3, BC 182/96 (BEI Resources NR-3797)-infected C6/36 cells (ATCC[®] CRL-1660[™]) and 1:100 and 1:300 dilutions of NR-50327

⁵Using WNV, 44-BA 80900-4 (BEI resources NR-49915)-infected and WNV, CO 1862 (BEI Resources NR-49916)-infected Vero cells (ATCC[®] CCL-81[™]) and a 1:100 dilution of NR-50327

⁶Using YFV 17D (BEI Resources NR-116)-infected Vero cells (ATCC[®] CCL-81[™]) and 1:100 and 1:300 dilutions of NR-50327

⁷Using ZIKV, H/PAN/2016/BEI-259634 (BEI Resources NR-50210)-, ZIKV, PRVABC59 (BEI Resources NR-50240)-, and ZIKV, P6-740 (BEI Resources NR-50245)-infected Vero 76, clone E6 cells (ATCC[®] CRL-1586[™]) and 1:100 and 1:300 dilutions of NR-50327

Figure 1



Lane 1: MW Markers (kDa)
Lane 2: NR-50327

Certificate of Analysis for NR-50327

Date: 26 MAY 2016

Signature: 

BEI Resources Authentication

ATCC®, on behalf of BEI Resources, hereby represents and warrants that the material provided under this certificate has been subjected to the tests and procedures specified and that the results described, along with any other data provided in this certificate, are true and accurate to the best of ATCC®'s knowledge.

ATCC® is a trademark of the American Type Culture Collection.

You are authorized to use this product for research use only. It is not intended for human use.

