

Enterobacter cloacae complex, Strain BEI06

Catalog No. NR-50396

Product Description: *Enterobacter cloacae* complex (*E. cloacae* complex), strain BEI06 is from an unknown origin.

Lot¹: 64391832

Manufacturing Date: 25FEB2016

TEST	SPECIFICATIONS	RESULTS
Phenotypic Analysis Cellular morphology Colony morphology ² Motility (wet mount) Beta-lactamase ³ VITEK [®] 2 Compact (GN card)	Gram-negative rods Report results Report results Report results <i>E. cloacae</i> complex (≥ 90%)	Gram-negative rods Circular, convex, entire, smooth and cream (Figure 1) Motile Positive <i>E. cloacae</i> complex (91%) ⁴
Antibiotic Susceptibility Profile VITEK [®] (AST-GN84 Card) ^{5,6} Amoxicillin/Clavulanic Acid Piperacillin/Tazobactam Cefazolin Ceftriaxone Cefepime Aztreonam Ertapenem Imipenem Meropenem Gentamicin Ciprofloxacin Levofloxacin Tetracycline Nitrofurantoin Trimethoprim/Sulfamethoxazole Ettest [®] antibiotic test strips ⁷ Ampicillin ⁸	Report results Report results Report results Report results Report results Report results Report results Report results Report results Report results Report results Report results Report results Report results Report results Report results	Resistant (≥ 32 µg/mL) Resistant (≥ 128 µg/mL) Resistant (≥ 64 µg/mL) Resistant (≥ 64 µg/mL) Sensitive (≤ 1 µg/mL) Resistant (= 32 µg/mL) Sensitive (≤ 0.5 µg/mL) Sensitive (= 0.5 µg/mL) Sensitive (≤ 0.25 µg/mL) Resistant (≥ 16 µg/mL) Resistant (≥ 4 µg/mL) Resistant (≥ 8 µg/mL) Sensitive (= 4 µg/mL) Intermediate (= 64 µg/mL) Sensitive (= 40 µg/mL)
Genotypic Analysis Sequencing of 16S ribosomal RNA gene (~ 1460 base pairs)	≥ 99% sequence identity to <i>E. cloacae</i> complex type strain (GenBank: NR_118568.1)	99.4% sequence identity to <i>E. cloacae</i> complex type strain (GenBank: NR_118568.1) ⁹
Purity (post-freeze)¹⁰	Consistent with expected colony morphology	Consistent with expected colony morphology
Viability (post-freeze)²	Growth	Growth

¹NR-50396 was produced by inoculation of the deposited material into Tryptic Soy broth and grown for 1 day at 37°C in an aerobic atmosphere. Broth inoculum was added to Tryptic Soy agar kolles, which were grown for 1 day at 37°C in an aerobic atmosphere to produce this lot.

²1 day at 37°C in an aerobic atmosphere on Tryptic Soy agar

³The production of beta-lactamase was detected using a Cefinase[™] Paper Disc (BBL[™] 231650).

⁴Percent probabilities above 90% indicate a close match to the typical biochemical pattern for the given organism, with a percent probability of 99% being a perfect match between the test reaction pattern and the unique biochemical pattern of the given organism or organism group. For additional information, please refer to O'Hara, C.M. and J. M. Miller. "Evaluation of the VITEK 2 ID-GNB Assay for Identification of Members of the Family Enterobacteriaceae and Other Nonenteric Gram-Negative Bacilli and Comparison with the VITEK GNI+ Card." *J. Clin. Microbiol.* 41 (2003): 2096-2101. PubMed: 12734254.

⁵Minimum Inhibitory Concentration (MIC); MIC Interpretation Guideline: CLSI M100-S22 (2012)

⁶No results were obtained for ampicillin, ampicillin/sulbactam and Extended-Spectrum Beta-Lactamases (ESBLs) from the VITEK[®] (AST-GN84 Card) analysis. Alternative methods of testing are recommended by the manufacturer.

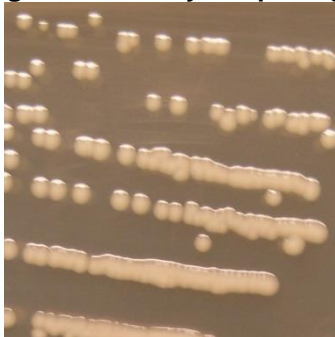
⁷1 day at 37°C in an aerobic atmosphere on Mueller Hinton agar

⁸For ampicillin (bioMérieux Ettest[®] 412252), a MIC ≤ 8 µg/mL is sensitive, a MIC = 16 µg/mL is intermediate and a MIC ≥ 32 µg/mL is resistant.

⁹Also consistent with other *Enterobacter* species

¹⁰Purity of this lot was assessed for 7 days at 37°C in an aerobic atmosphere on Tryptic Soy agar.

Figure 1: Colony Morphology



Date: 29 SEP 2016

Signature: 

BEI Resources Authentication

ATCC[®], on behalf of BEI Resources, hereby represents and warrants that the material provided under this certificate has been subjected to the tests and procedures specified and that the results described, along with any other data provided in this certificate, are true and accurate to the best of ATCC[®]'s knowledge.

ATCC[®] is a trademark of the American Type Culture Collection.

You are authorized to use this product for research use only. It is not intended for human use.

