

***Atopobium parvulum*, Strain CC14Z**

Catalog No. HM-1035

Product Description: *Atopobium parvulum*, strain CC14Z was isolated in October 2010 from colonic biopsy tissue of a human subject in Victoria, British Columbia, Canada.

Lot^{1,2}: 64447403

Manufacturing Date: 29JUL2016

TEST	SPECIFICATIONS	RESULTS
Phenotypic Analysis Cellular morphology Colony morphology ⁴ Motility (wet-mount)	Gram-positive cocci Report results Report results	Gram-positive coccobacilli ³ Circular, convex, entire, smooth, translucent and gray (Figure 1) Non-motile
Genotypic Analysis Sequencing of 16S ribosomal RNA gene (~ 850 base pairs)	≥ 99% sequence identity to <i>A. parvulum</i> type strain (GenBank: NR_102936.1)	≥ 99% sequence identity to <i>A. parvulum</i> type strain (GenBank: NR_102936.1)
Purity (post-freeze) Anaerobic growth ⁵ Aerobic growth ⁶	Consistent with expected colony morphology No growth	Consistent with expected colony morphology No growth
Viability (post-freeze)⁴	Growth	Growth

¹Quality control of HMP material is only performed to demonstrate that the material distributed by BEI Resources is identical to the deposited material. It should not be considered a complete characterization of the deposited organism.

²*Atopobium parvulum*, strain CC14Z was deposited by Professor Emma Allen-Vercoe, Department of Molecular and Cellular Biology, University of Guelph, Guelph, Ontario, Canada. HM-1035 was produced by inoculation of the deposited material into Peptone Yeast Extract Glucose broth with 0.18% Tween 80 and incubated for 1 day at 37°C in an anaerobic atmosphere (< 5% O₂; Remel™ Pack-Anaero™). The material from the initial growth was passaged once in Peptone Yeast Extract Glucose broth with 0.18% Tween 80 for 1 day at 37°C in an anaerobic atmosphere to produce this lot.

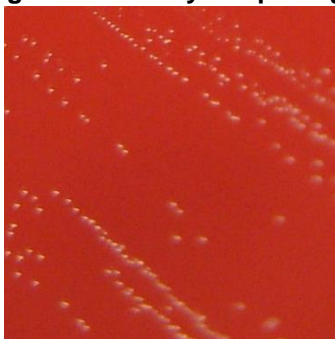
³Elongated or elliptical-shaped cells may be observed when cells are grown in media lacking Tween. For more information, please refer to Olsen, I., et al. "*Lactobacillus uli* sp. nov. and *Lactobacillus rimae* sp. nov. from the Human Gingival Crevice and Emended Descriptions of *Lactobacillus minutus* and *Streptococcus parvulus*." *Int. J. Syst. Evol. Microbiol.* 41 (1991): 261-266.

⁴1 day at 37°C in an anaerobic atmosphere on Tryptic Soy agar with 5% defibrinated sheep blood

⁵Purity of this lot was assessed for 8 days at 37°C in an anaerobic atmosphere on Tryptic Soy agar with 5% defibrinated sheep blood.

⁶Purity of this lot was assessed for 8 days at 37°C in an aerobic atmosphere with 5% CO₂ on Tryptic Soy agar with 5% defibrinated sheep blood.

Figure 1: Colony Morphology



Certificate of Analysis for HM-1035

Date: 04 OCT 2016

Signature:



BEI Resources Authentication

ATCC®, on behalf of BEI Resources, hereby represents and warrants that the material provided under this certificate has been subjected to the tests and procedures specified and that the results described, along with any other data provided in this certificate, are true and accurate to the best of ATCC®'s knowledge.

ATCC® is a trademark of the American Type Culture Collection.

You are authorized to use this product for research use only. It is not intended for human use.

