

***Bifidobacterium longum* subsp. *longum*, Strain 44B**

Catalog No. HM-845

Product Description: *Bifidobacterium longum* (*B. longum*) subsp. *longum*, strain 44B was isolated from a one-year-old human patient. **Note:** The strain designation on the vial label for lots 61773983 and 64498984 is incorrect. The correct strain designation is 44B.

Lot^{1,2}: 64498984

Manufacturing Date: 02SEP2016

TEST	SPECIFICATIONS	RESULTS
Phenotypic Analysis Cellular morphology Colony morphology ³ Motility	Gram-positive rods Report results Report results	Gram-positive rods Circular, convex, entire, smooth and white (Figure 1) Non-motile
Genotypic Analysis Sequencing of 16S ribosomal RNA gene (~ 820 base pairs)	≥ 99% identical to GenBank: AJTM01000045 (<i>B. longum</i> subsp. <i>longum</i> , strain 44B)	≥ 99% identical to GenBank: AJTM01000045 (<i>B. longum</i> subsp. <i>longum</i> , strain 44B) ⁴
Purity (post-freeze) Anaerobic growth ⁵ Aerobic growth ⁶	Growth consistent with expected morphology No growth	Growth consistent with expected morphology No growth
Viability (post-freeze)³	Growth	Growth

¹Quality control of HMP material is only performed to demonstrate that the material distributed by BEI Resources is identical to the deposited material. It should not be considered a complete characterization of the deposited organism.

²*B. longum* subsp. *longum*, strain 44B was deposited by Andrei Shkoporov, Senior Scientist, Department of Microbiology, Russian National Research Medical University, Moscow, Russia. HM-845 was produced by inoculation of the deposited material into Modified Reinforced Clostridial broth and incubated for 2 days at 37°C in an anaerobic atmosphere (< 5% O₂; Remel™ Pack-Anaero™). The material from the initial growth was passaged once in Modified Reinforced Clostridial broth for 2 days at 37°C in an anaerobic atmosphere to produce this lot.

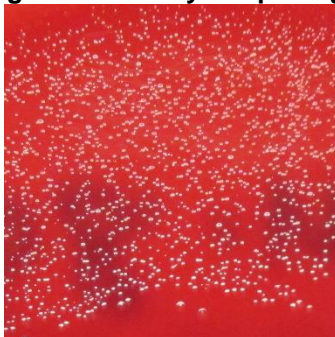
³2 days at 37°C in an anaerobic atmosphere on Tryptic Soy agar with 5% defibrinated sheep blood

⁴Also consistent with *Bifidobacterium longum* subsp. *infantis* and *Bifidobacterium longum* subsp. *suis*

⁵Purity of this lot was assessed for 7 days at 37°C in an anaerobic atmosphere on Tryptic Soy agar with 5% defibrinated sheep blood.

⁶Purity of this lot was assessed for 7 days at 37°C in an aerobic atmosphere with 5% CO₂ on Tryptic Soy agar with 5% defibrinated sheep blood.

Figure 1: Colony Morphology



Certificate of Analysis for HM-845

Date: 20 OCT 2016

Signature:



BEI Resources Authentication

ATCC®, on behalf of BEI Resources, hereby represents and warrants that the material provided under this certificate has been subjected to the tests and procedures specified and that the results described, along with any other data provided in this certificate, are true and accurate to the best of ATCC®'s knowledge.

ATCC® is a trademark of the American Type Culture Collection.

You are authorized to use this product for research use only. It is not intended for human use.

