

***Escherichia coli*, Strain 83972**

Catalog No. HM-50

Product Description: *Escherichia coli* (*E. coli*), strain 83972 was isolated from the urine of a young girl with a three-year history of asymptomatic bacteriuria (ABU) with stable renal function in Gothenburg, Sweden.

Lot^{1,2}: 64498965

Manufacturing Date: 31AUG2016

TEST	SPECIFICATIONS	RESULTS
Phenotypic Analysis Cellular morphology Colony morphology ³ Motility	Gram-negative rod Report results Report results	Gram-negative rod Circular, low convex, entire, smooth and cream (Figure 1) Motile
Genotypic Analysis Sequencing of 16S ribosomal RNA gene (~ 1500 base pairs)	≥ 99% identical to <i>E. coli</i> , strain 83972 (GenBank: CP001671)	≥ 99% identical to <i>E. coli</i> , strain 83972 (GenBank: CP001671)
Purity (post-freeze)⁴	Consistent with expected colony morphology	Consistent with expected colony morphology
Viability (post-freeze)³	Growth	Growth

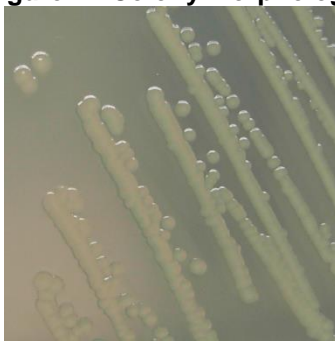
¹Quality control of HMP material is only performed to demonstrate that the material distributed by BEI Resources is identical to the deposited material. It should not be considered a complete characterization of the deposited organism.

²*E. coli*, strain 83972 was deposited by Richard Hull, Ph. D., Consultant for the Department of Molecular Virology and Microbiology, Baylor College of Medicine, Houston, Texas, USA. The deposited material was inoculated into Tryptic Soy broth and incubated for 1 day at 37°C in an aerobic atmosphere. The material from the initial growth was added to Tryptic Soy agar kolles and grown for 1 day at 37°C in an aerobic atmosphere to produce this lot.

³1 day at 37°C in an aerobic atmosphere on Tryptic Soy agar

⁴Purity of this lot was assessed for 7 days at 37°C in an aerobic atmosphere on Tryptic Soy agar.

Figure 1: Colony Morphology



Date: 20 OCT 2016

Signature:



BEI Resources Authentication

ATCC®, on behalf of BEI Resources, hereby represents and warrants that the material provided under this certificate has been subjected by ATCC® to the tests and procedures specified and that the results described, along with any other data provided in this certificate, are true and accurate to the best of ATCC®'s knowledge.

ATCC® is a trademark of the American Type Culture Collection.

You are authorized to use this product for research use only. It is not intended for human use.

