

Serratia sp., Strain Ag2

Catalog No. NR-50123

Product Description: *Serratia* sp., strain Ag2 was isolated in 2014 from the midgut of *Anopheles gambiae*, strain G3, a lab strain used for malaria research in Las Cruces, New Mexico.

Lot¹: 64360363

Manufacturing Date: 07JUL2016

TEST	SPECIFICATIONS	RESULTS
Phenotypic Analysis Cellular morphology Colony morphology ² Motility (wet mount) VITEK [®] MS (MALDI-TOF)	Gram-negative rods Report results Report results <i>Serratia</i> sp.	Gram-negative rods Circular, convex, entire, smooth and white (Figure 1) Motile <i>Serratia odorifera</i> (81.4%)
Genotypic Analysis Sequencing of 16S ribosomal RNA gene (~ 1100 base pairs)	≥ 99% sequence identity to <i>Serratia</i> sp., strain Ag2 (Genbank: JQJ01000071.1)	99.5% sequence identity to <i>Serratia</i> sp., strain Ag2 (Genbank: JQJ01000071.1) ³
Purity (post-freeze)⁴	Growth consistent with expected colony morphology	Growth consistent with expected colony morphology
Viability (post-freeze)²	Growth	Growth

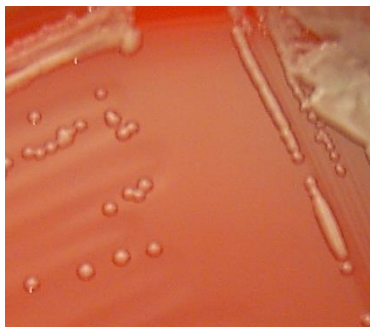
¹NR-50123 was produced by inoculation of the deposited material into Brain Heart Infusion broth and grown for 1 day at 26°C in an aerobic atmosphere. Broth inoculum was added to Tryptic Soy agar with 5% defibrinated sheep blood kolles, which were grown for 1 day at 28°C in an aerobic atmosphere to produce this lot.

²1 day at 28°C in an aerobic atmosphere on Tryptic Soy agar with 5% defibrinated sheep blood

³Although NR-50123 aligns favorably with the depositors' sequence, this organism did not align favorably with other members of the *Serratia* genus. Digital DNA-DNA hybridization (dDDH) analysis of the sequence was also inconclusive.

⁴Purity of this lot was assessed for 7 days on Tryptic Soy agar with 5% defibrinated sheep blood at 28°C and 37°C in an aerobic atmosphere with and without 5% CO₂.

Figure 1: Colony Morphology



Date: 06 OCT 2016

Signature: 

BEI Resources Authentication

ATCC[®], on behalf of BEI Resources, hereby represents and warrants that the material provided under this certificate has been subjected to the tests and procedures specified and that the results described, along with any other data provided in this certificate, are true and accurate to the best of ATCC[®]'s knowledge.

ATCC[®] is a trademark of the American Type Culture Collection. You are authorized to use this product for research use only. It is not intended for human use.

