

Cedecea sp., Strain Ag1

Catalog No. NR-50125

Product Description: *Cedecea* sp., strain Ag1 was isolated in 2012 from the midgut of *Anopheles gambiae*, strain G3, a lab strain used for malaria research, in Las Cruces, New Mexico, USA.

Lot¹: 64360367

Manufacturing Date: 04AUG2016

TEST	SPECIFICATIONS	RESULTS
Phenotypic Analysis Cellular morphology Colony morphology ² Motility (wet mount) VITEK [®] MS (MALDI-TOF)	Gram-negative rods Report results Report results <i>Cedecea</i> sp.	Gram-negative rods Irregular, convex, undulate, smooth and gray (Figure 1) Motile <i>Cedecea neteri</i> (50.0%) <i>Cedecea lapagei</i> (50.0%)
Genotypic Analysis Sequencing of 16S ribosomal RNA gene (~ 1420 base pairs)	≥ 99% sequence identity to <i>Cedecea</i> sp., strain Ag1 (Genbank: AKXM01000010.1)	99.9% sequence identity to <i>Cedecea</i> sp., strain Ag1 (Genbank: AKXM01000010.1) ³
Purity (post-freeze)⁴	Growth consistent with expected colony morphology	Growth consistent with expected colony morphology
Viability (post-freeze)²	Growth	Growth

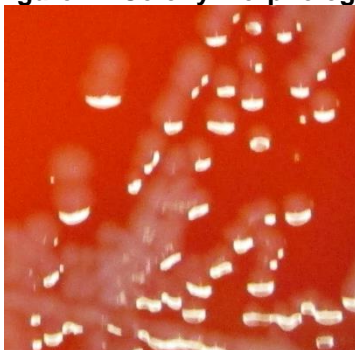
¹*Cedecea* sp., strain Ag1 was produced by inoculation of the deposited material into Tryptic Soy broth and grown for 2 days at 37°C in an aerobic atmosphere. Broth inoculum was added to a Tryptic Soy agar with 5% defibrinated sheep blood plate, which was grown for 1 day at 37°C in an aerobic atmosphere. The material was cryopreserved subsequent to the addition of glycerol to a final concentration of 10% (v/v). The frozen material was thawed and used to inoculate a tube of Tryptic Soy broth and grown for 1 day at 37°C in an aerobic atmosphere. Broth inoculum was added to Tryptic Soy agar with 5% defibrinated sheep blood kolles, which were grown for 1 day at 37°C in an aerobic atmosphere to produce this lot.

²1 day on Tryptic Soy agar with 5% defibrinated sheep blood at 37°C in an aerobic atmosphere

³NR-50125 was originally deposited as *Enterobacter* sp., however it did not align favorably with other members of the *Enterobacter* genus. Digital DNA-DNA hybridization (dDDH) analysis of the sequence suggests *Cedecea* sp.

⁴Purity of this lot was assessed for 7 days on Tryptic Soy agar with 5% defibrinated sheep blood at 37°C in an aerobic atmosphere.

Figure 1: Colony Morphology



Date: 29 NOV 2016

Signature:



BEI Resources Authentication

ATCC®, on behalf of BEI Resources, hereby represents and warrants that the material provided under this certificate has been subjected to the tests and procedures specified and that the results described, along with any other data provided in this certificate, are true and accurate to the best of ATCC®'s knowledge.

ATCC® is a trademark of the American Type Culture Collection.
You are authorized to use this product for research use only. It is not intended for human use.

