

Monoclonal Anti-Shiga-Like Toxin 2, Subunit A, Clone 11F11 (produced *in vitro*)

Catalog No. NR-50336

Product Description: Antibody Class: IgG2ak

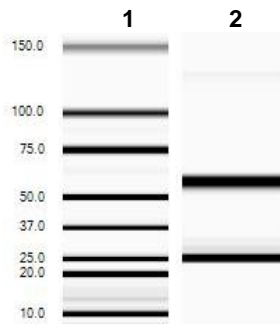
Mouse monoclonal antibody prepared against the A subunit of Shiga-like toxin 2 from *Escherichia coli* was purified from clone 11F11 hybridoma supernatant by protein G affinity chromatography.

Lot: 64233084

Manufacturing Date: 28JUN2016

TEST	SPECIFICATIONS	RESULTS
Antibody Class Determination	IgG2ak	IgG2ak
Experion™ Pro260 Analysis	Correct molecular weight (MW) for heavy and light chains Report results	Correct MW for heavy and light chains (Figure 1) 94.1% pure
Protein Concentration by Spectrophotometer at OD ₂₈₀	Report results	1.3 mg/mL
Sterility	0.22 µm filter-sterilized	0.22 µm filter-sterilized

Figure 1: Experion™ Gel



Lane 1: Experion™ Pro260 Ladder, kDa

Lane 2: NR-50336

Date: 06 DEC 2016

Signature: 

BEI Resources Authentication

ATCC®, on behalf of BEI Resources, hereby represents and warrants that the material provided under this certificate has been subjected to the tests and procedures specified and that the results described, along with any other data provided in this certificate, are true and accurate to the best of ATCC®'s knowledge.

ATCC® is a trademark of the American Type Culture Collection.

You are authorized to use this product for research use only. It is not intended for human use.

