

Staphylococcus aureus, Strain NY-282

Catalog No. NR-46242

Product Description: *Staphylococcus aureus* (*S. aureus*), strain NY-282 was isolated in 2005 from kidney fluid of an 83-year-old male with hydronephrosis and a urinary tract infection (UTI) in New York, USA. *S. aureus*, strain NY-282 is a clinically-associated methicillin-resistant *S. aureus* (MRSA) strain.

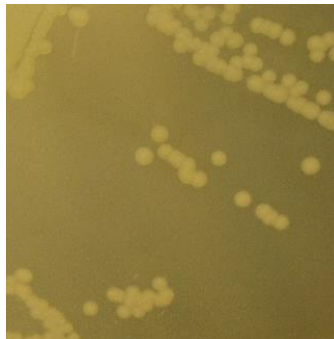
Lot¹: 2115

Manufacturing Date: 02NOV2016

TEST	SPECIFICATIONS	RESULTS
Phenotypic Analysis Cellular morphology Colony morphology ² Motility (wet mount) Hemolysis ³ Biochemical characterization Catalase Coagulase ⁴ VITEK [®] 2 Compact (GP card)	Gram-positive cocci Report results Report results Report results Positive Report results ≥ 90% probability of being <i>S. aureus</i>	Gram-positive cocci Circular, convex, entire, smooth and cream (Figure 1) Non-motile β-hemolytic Positive Positive <i>S. aureus</i> (99% probability) ⁵
Antibiotic Susceptibility Profile VITEK [®] (AST-GP71 card) ⁶ Beta-lactamase ⁷ Cefoxitin screen Benzylpenicillin Oxacillin Gentamicin Ciprofloxacin Levofloxacin Moxifloxacin Clindamycin (inducible resistance) Erythromycin Quinupristin/dalfopristin Linezolid Daptomycin Vancomycin Minocycline Tetracycline Tigecycline Nitrofurantoin Rifampicin Trimethoprim/sulfamethoxazole Etest [®] antibiotic test strips ¹⁰ Chloramphenicol ¹¹ Teicoplanin ¹¹	Report results Report results Report results Resistant Sensitive Report results Resistant Report results Report results Resistant Report results Sensitive Sensitive Sensitive Sensitive Sensitive Report results Sensitive Report results Report results Sensitive Sensitive Report results Report results	Positive Positive Resistant (≥ 0.5 µg/mL) Resistant (≥ 4 µg/mL) Sensitive (≤ 0.5 µg/mL) Resistant (≥ 8 µg/mL) Resistant (≥ 8 µg/mL) Resistant (≥ 8 µg/mL) Positive ⁸ Resistant (≥ 8 µg/mL) Sensitive (≤ 0.25 µg/mL) Sensitive (= 2 µg/mL) Sensitive (= 0.25 µg/mL) Sensitive (= 1 µg/mL) Sensitive (≤ 0.5 µg/mL) Sensitive (≤ 1 µg/mL) Sensitive (≤ 0.12 µg/mL) ⁹ Sensitive (≤ 16 µg/mL) Sensitive (≤ 0.5 µg/mL) Sensitive (≤ 10 µg/mL) Sensitive (= 6 µg/mL) ¹² Sensitive (= 1.5 µg/mL)
Genotypic Analysis Sequencing of 16S ribosomal RNA gene (~ 820 base pairs)	≥ 99% sequence identity to <i>S. aureus</i> type strain (GenBank: L37597)	100% sequence identity to <i>S. aureus</i> type strain (GenBank: L37597)
Purity (post-freeze)¹³	Consistent with expected colony morphology	Consistent with expected colony morphology
Viability (post-freeze)²	Growth	Growth

- ¹ *S. aureus*, strain NY-282 was deposited to BEI Resources as part of the NARSA collection. NR-46242 was produced by inoculation of the deposited material into Tryptic Soy broth and grown 1 day at 37°C in an aerobic atmosphere. Broth inoculum was added to Tryptic Soy agar kolles which were grown 1 day at 37°C in an aerobic atmosphere to produce this lot.
- ² 1 day at 37°C in an aerobic atmosphere on Tryptic Soy agar
- ³ 1 day at 37°C in an aerobic atmosphere on Tryptic Soy agar with 5% defibrinated sheep blood
- ⁴ 4 hours at 37°C in rabbit serum with 0.15% EDTA (Coagulase Plasma BBL™ 240827)
- ⁵ Percent probabilities above 90% indicate a close match to the typical biochemical pattern for the given organism, with a percent probability of 99% being a perfect match between the test reaction pattern and the unique biochemical pattern of the given organism or organism group. For additional information, please refer to O'Hara, C.M. and J. M. Miller. "Evaluation of the VITEK 2 ID-GNB Assay for Identification of Members of the Family Enterobacteriaceae and Other Nonenteric Gram-Negative Bacilli and Comparison with the VITEK GNI+ Card." *J. Clin. Microbiol.* 41 (2003): 2096-2101. PubMed: 12734254.
- ⁶ Minimum Inhibitory Concentration (MIC); MIC Interpretation Guideline: CLSI M100-S22 (2012)
- ⁷ The production of beta-lactamase was detected using a Cefinase™ Paper Disc (BBL™ 231650).
- ⁸ The VITEK® AST-GP71 card tests for both clindamycin resistance and inducible clindamycin resistance (ICR). A positive ICR test is indicative of inducible MLS_B resistance, which confers resistance to macrolides, lincosamides, and type B streptogramin and the isolate should be considered resistant to clindamycin. *S. aureus*, strain NY-282 was found to be sensitive to clindamycin but had a positive ICR test and therefore is considered resistant to clindamycin.
- ⁹ MIC Interpretation Guideline: EUCAST Version 4.0 (2014)
- ¹⁰ 1 day at 37°C in an aerobic atmosphere on Mueller Hinton agar
- ¹¹ For both chloramphenicol (bioMérieux Etest® 412308) and teicoplanin (bioMérieux Etest® 412459), a MIC ≤ 8 µg/mL is sensitive, a MIC = 16 µg/mL is intermediate and a MIC ≥ 32 µg/mL is resistant.
- ¹² *S. aureus*, strain NY-282 was deposited as having an intermediate susceptibility to chloramphenicol. Antibiotic susceptibility testing performed in duplicate determined that strain NY-282 is sensitive to chloramphenicol
- ¹³ Purity of this lot was assessed for 7 days at 37°C in an aerobic atmosphere with 5% CO₂ on Tryptic Soy agar with 5% defibrinated sheep blood.

Figure 1: Colony Morphology



Date: 09 JAN 2017

Signature:

BEI Resources Authentication

ATCC®, on behalf of BEI Resources, hereby represents and warrants that the material provided under this certificate has been subjected to the tests and procedures specified and that the results described, along with any other data provided in this certificate, are true and accurate to the best of ATCC®'s knowledge.

ATCC® is a trademark of the American Type Culture Collection.

You are authorized to use this product for research use only. It is not intended for human use.

