

***Escherichia coli*, Strain DH5αλpir**

**Catalog No. NR-50350**

**Product Description:** *Escherichia coli* (*E. coli*), strain DH5αλpir contains the *pir* genes which allow genetic manipulations of vectors prior to transfer into *Staphylococcus* species. Strain DH5αλpir has genotype F<sup>-</sup>Φ80*dlacZ* Δ*M15* Δ*lacZYA-argF* U169 *deoR supE44 hsdR17 recA1 endA1 gyrA96 thi-1 relA1*.

**Lot<sup>1</sup>: 2095**

**Manufacturing Date: 26OCT2016**

TEST	SPECIFICATIONS	RESULTS
<b>Phenotypic Analysis</b> Cellular morphology Colony morphology <sup>2</sup>  Motility (wet mount) VITEK <sup>®</sup> MS (MALDI-TOF)	Gram-negative rods Report results  Report results Consistent with <i>E. coli</i>	Gram-negative rods Circular, low convex, entire, smooth and gray (Figure 1) Motile <i>E. coli</i> (99.9%)
<b>Genotypic Analysis</b> Sequencing of 16S ribosomal RNA gene (~ 1410 base pairs) Riboprinter <sup>®</sup> Microbial Characterization System	≥ 99% sequence identity to <i>E. coli</i> DH5α (GenBank: JRBB01000068) ≥ 85% <i>E. coli</i>	99.7% sequence identity to <i>E. coli</i> DH5α (GenBank: JRBB01000068) <sup>3</sup> 95% <i>E. coli</i>
<b>Purity (post-freeze)<sup>4</sup></b>	Growth consistent with expected colony morphology	Growth consistent with expected colony morphology
<b>Viability (post-freeze)<sup>2</sup></b>	Growth	Growth

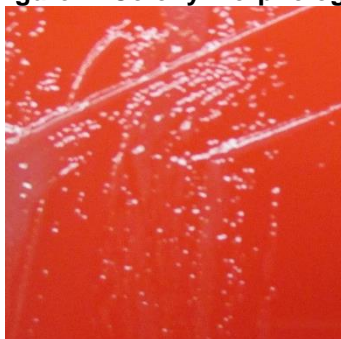
<sup>1</sup>NR-50350 was produced by inoculation of the deposited material in Tryptic Soy broth and incubated for 1 day at 37°C in an aerobic atmosphere. Broth inoculum was added to Tryptic Soy agar with 5% defibrinated sheep blood kolles for 1 day at 37°C in an aerobic atmosphere to produce this lot.

<sup>2</sup>1 day at 37°C in an aerobic atmosphere on Tryptic Soy agar with 5% defibrinated sheep blood

<sup>3</sup>Also 99.9% sequence identity to some *Shigella flexneri* strains

<sup>4</sup>Purity of this lot was assessed for 7 days at 37°C in an aerobic atmosphere with 5% CO<sub>2</sub> on Tryptic Soy agar with 5% defibrinated sheep blood

**Figure 1: Colony Morphology**



**Date:** 10 JAN 2017

**Signature:** 

BEI Resources Authentication

ATCC<sup>®</sup>, on behalf of BEI Resources, hereby represents and warrants that the material provided under this certificate has been subjected to the tests and procedures specified and that the results described, along with any other data provided in this certificate, are true and accurate to the best of ATCC<sup>®</sup>'s knowledge.

ATCC<sup>®</sup> is a trademark of the American Type Culture Collection.

You are authorized to use this product for research use only. It is not intended for human use.

