

Certificate of Analysis for HM-109D

Genomic DNA from *Corynebacterium amycolatum*, Strain SK46

Catalog No. HM-109D

Product Description: Genomic DNA was obtained from a preparation of *Corynebacterium amycolatum* (*C. amycolatum*), strain SK46.

Lot^{1,2}: 64498988

Manufacturing Date: 01SEP2016

| TEST | SPECIFICATIONS | RESULTS |
|---|---|---|
| Sequencing of 16S Ribosomal RNA Gene (~ 780 base pairs) | ≥ 99% sequence identity to <i>C. amycolatum</i> , strain SK46 (GenBank: ABZU01000033.1) | 99.9% sequence identity to <i>C. amycolatum</i> , strain SK46 (GenBank: ABZU01000033.1) |
| Agarose Gel Electrophoresis | High molecular weight chromosomal DNA | High molecular weight chromosomal DNA (Figure 1) |
| Concentration by PicoGreen® Measurement | 0.7 to 1.5 µg in 25 to 100 µL per vial | 0.9 µg in 58 µL per vial (16 µg/mL) |
| Functional Activity by PCR Amplification 16S ribosomal RNA gene | ~ 1500 base pair amplicon | ~ 1500 base pair amplicon |
| OD₂₆₀/OD₂₈₀ Ratio | 1.7 to 2.1 | 1.7 |
| Bacterial Inactivation 10% of total yield plated on Tryptic Soy agar with 5% defibrinated sheep blood ^{3,4} | No viable bacteria detected | No viable bacteria detected |

¹Quality control of HMP organisms used for DNA extraction is only performed to demonstrate that the material produced by BEI Resources is identical to the deposited material. It should not be considered a complete characterization of the deposited organism.

²The bacterial preparation used for extraction of genomic DNA was produced by inoculation of HM-109 (Lot 59925923) into Brain Heart Infusion broth which was incubated for 1 day at 37°C in an aerobic atmosphere. Broth inoculum was added to Tryptic Soy agar with 5% defibrinated sheep blood kolles. After incubation for 1 day at 37°C in an aerobic atmosphere, genomic DNA was extracted using proprietary technology.

³14 days at 37°C in an aerobic atmosphere

⁴An extraction procedure was used that has been shown to consistently inactivate 100% of Gram-positive and Gram-negative bacteria.

Date: 24 JAN 2017

Signature:



BEI Resources Authentication

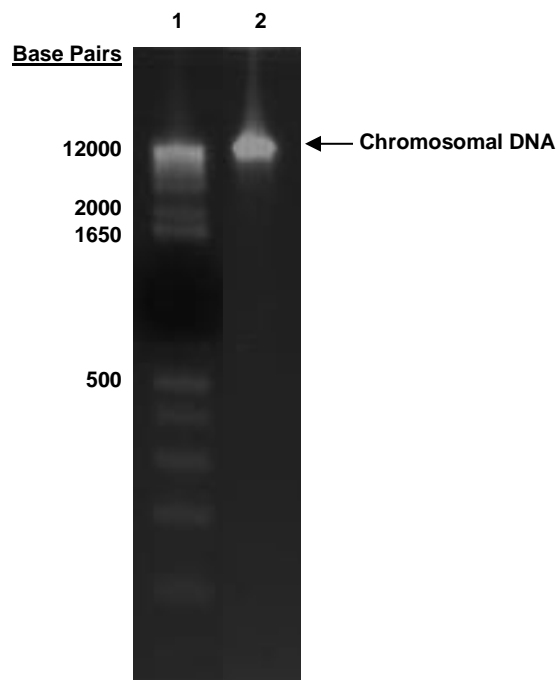
ATCC®, on behalf of BEI Resources, hereby represents and warrants that the material provided under this certificate has been subjected to the tests and procedures specified and that the results described, along with any other data provided in this certificate, are true and accurate to the best of ATCC®'s knowledge.

ATCC® is a trademark of the American Type Culture Collection.

You are authorized to use this product for research use only. It is not intended for human use.



Figure 1: Agarose Gel Electrophoresis



Lane 1: Invitrogen™ TrackIt 1 Kb Plus DNA Ladder™
Lane 2: 158 ng of HM-109D