

***Mycobacterium tuberculosis*, Strain H37Rv, Culture Filtrate Proteins**

Catalog No. NR-14825

This reagent is the tangible property of the U.S. Government.

Product Description: NR-14825 is a preparation of culture filtrate proteins (CFP) from *Mycobacterium tuberculosis* (*M. tuberculosis*), strain H37Rv and contains most of the excreted and secreted proteins of the organism.

Lot¹: 64527431

Manufacturing Date: 15SEP2016

TEST	SPECIFICATIONS	RESULTS
SDS-PAGE (Silver Stain)	Report results	Multiple protein bands visible (Figure 1)
Concentration by Bicinchoninic Acid Protein Assay²	Report results	2.22 mg per mL
Final Product Quantity per vial Volume per vial	Report results Report results	1.02 mg 0.460 mL
Western Blot Analysis Monoclonal anti-SodA ³ Monoclonal anti-GroEL2 ⁴ Monoclonal anti-Ag85 Complex ⁵ Monoclonal anti-GroES ⁶ Monoclonal anti-PhoS1 ⁷ Monoclonal anti-DnaK ⁸ Monoclonal anti-DnaK ⁹	Reactive Reactive Reactive Reactive Reactive Reactive Reactive	Reactive (Figure 2) Reactive (Figure 2) Reactive (Figure 2) Reactive (Figure 2) Reactive (Figure 2) Reactive (Figure 2) Reactive (Figure 2)

¹Production was performed by Colorado State University (CSU) and provided as a bulk lot. NRC-14825 bulk lot 60398909 (CSU bulk lot 11.Rv.2.8.29.5.CFP) was aliquoted on 15SEP2016 as NR-14825 lot 64527431. Testing by BEI Resources was performed on NR-14825 lot 64527431 after vialing. The CSU documentation for bulk lot 11.Rv.2.8.29.5.CFP is attached.

²Using BSA as a standard

³*M. leprae* anti-SodA monoclonal antibody (BEI Resources, NR-19847) (1:20 dilution)

⁴*M. tuberculosis* anti-GroEL2 monoclonal antibody (BEI Resources, NR-13813) (1:100 dilution)

⁵*M. tuberculosis* anti-Ag85 complex monoclonal antibody (BEI Resources, NR-13816) (1:20 dilution)

⁶*M. tuberculosis* anti-GroES monoclonal antibody (BEI Resources, NR-49223) (1:1000 dilution)

⁷*M. tuberculosis* anti-PhoS1 monoclonal antibody (BEI Resources, NR-13790) (1:100 dilution)

⁸*M. tuberculosis* anti-DnaK (clone A) monoclonal antibody (BEI Resources, NR-49679) (1:1000 dilution)

⁹*M. tuberculosis* anti-DnaK (clone B) monoclonal antibody (BEI Resources, NR-50100) (1:1000 dilution)

Date: 24 JAN 2017

Signature:



BEI Resources Authentication

ATCC®, on behalf of BEI Resources, hereby represents and warrants that the material provided under this certificate has been subjected to the tests and procedures specified and that the results described, along with any other data provided in this certificate, are true and accurate to the best of ATCC®'s knowledge.

ATCC® is a trademark of the American Type Culture Collection.

You are authorized to use this product for research use only. It is not intended for human use.



Figure 1: SDS-PAGE of NR-14825

Lane 1: Precision Plus Protein™ Standard
 Lane 2: NR-14825, 11 µg
 Lane 3: NR-14825, 22 µg

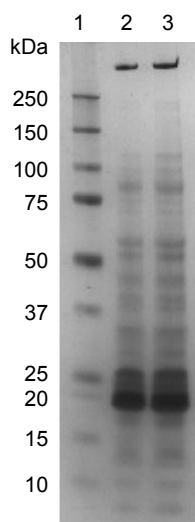
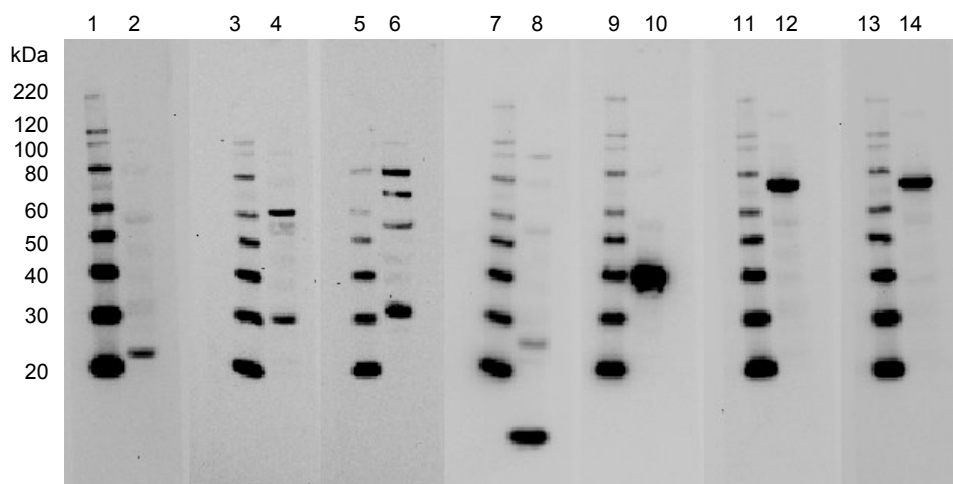


Figure 2: Western Blots of Prominent Culture Filtrate Proteins



Lane 1: MagicMark™ XP Protein Standard
 Lane 2: NR-14825 (22 µg) with anti-SodA
 Lane 3: MagicMark™ XP Protein Standard
 Lane 4: NR-14825 (22 µg) with anti-GroEL2
 Lane 5: MagicMark™ XP Protein Standard
 Lane 6: NR-14825 (22 µg) with anti-Ag85 complex
 Lane 7: MagicMark™ XP Protein Standard
 Lane 8: NR-14825 (22 µg) with anti-GroES
 Lane 9: MagicMark™ XP Protein Standard
 Lane 10: NR-14825 (22 µg) with anti-PhoS1
 Lane 11: MagicMark™ XP Protein Standard
 Lane 12: NR-14825 (22 µg) with anti-DnaK
 Lane 13: MagicMark™ XP Protein Standard
 Lane 14: NR-14825 (22 µg) with anti-DnaK