

Genomic DNA from *Campylobacter jejuni* subsp. *jejuni*, Strain CIP 702

Catalog No. NR-4199

Product Description: Genomic DNA was isolated from a preparation of *Campylobacter jejuni* subsp. *jejuni*, strain CIP 702.

Lot¹: 57977516

Manufacturing Date: 29JAN2008

TEST	SPECIFICATIONS	RESULTS
Sequencing of 16S Ribosomal RNA Gene (~ 1350 base pairs)	Consistent with <i>Campylobacter jejuni</i>	Consistent with <i>Campylobacter jejuni</i> ²
Agarose Gel Electrophoresis	High molecular weight chromosomal DNA	High molecular weight chromosomal DNA (Figure 1)
Concentration by PicoGreen[®] Measurement	4 to 6 µg in 25 to 100 µL per vial	4.3 µg in 42 µL per vial (104 µg/mL)
Functional Activity by PCR Amplification 16S ribosomal RNA gene	~ 1500 bp amplicon	~ 1500 bp amplicon
OD₂₆₀/OD₂₈₀ Ratio	1.7 to 1.9	1.8
Bacterial Inactivation 10% of total yield plated on Tryptic Soy Agar with 5% defibrinated sheep blood ^{3,4}	No viable bacteria detected	No viable bacteria detected

¹The bacterial preparation used for extraction of genomic DNA was produced by inoculation of NR-125 (Lot 3665663) into Tryptic Soy Broth (BD 211824) on Tryptic Soy Agar (BD 236950) with 5% defibrinated sheep blood Kolle. After incubation for 24 hours at 37°C in a microaerophilic (3–5% O₂ and 5% CO₂) atmosphere, genomic DNA was extracted using proprietary technology.

²Also consistent with *Campylobacter coli*.

³Incubated for 7 days at 37°C and microaerophilic (3–5% O₂ and 5% CO₂) atmosphere.

⁴An extraction procedure was used that has been shown to consistently inactivate 100% of Gram-negative bacteria.

Date: 13 MAY 2008

Signature: Signature on File

Title: Technical Manager, BEI Authentication or designee

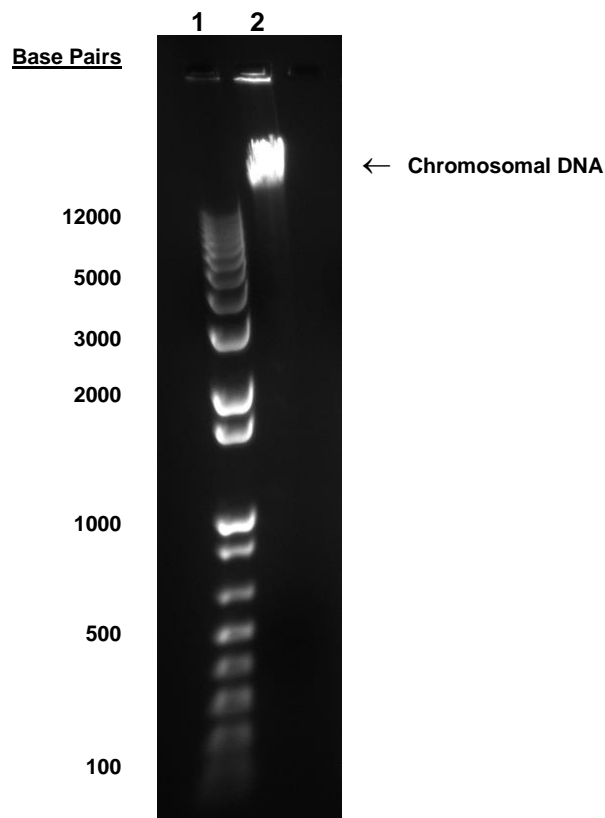
ATCC[®], on behalf of BEI Resources, hereby represents and warrants that the material provided under this certificate has been subjected to the tests and procedures specified and that the results described, along with any other data provided in this certificate, are true and accurate to the best of ATCC[®]'s knowledge.

ATCC[®] is a trademark of the American Type Culture Collection.

You are authorized to use this product for research use only. It is not intended for human use.



Figure 1



Lane 1: Invitrogen™ 1Kb Plus DNA Ladder™
Lane 2: 200 ng of NR-4199