

Anthrax Protective Antigen (PA), Recombinant from *Escherichia coli*

Catalog No. NR-3780

This reagent is the property of the U.S. Government.

Product Description: Recombinant anthrax protective antigen (PA) was produced in *Escherichia coli* and purified using conventional chromatographic techniques.

Lot: 58015139

Manufacturing Date: 11JUN2004

| TEST | SPECIFICATIONS | RESULTS |
|--|---|---|
| Visual Appearance ¹ | Clear and colorless | Clear and colorless |
| SDS-PAGE (Coomassie Blue) | Dominant band ~ 80–90 kDa | See Figure 1 |
| Purity by HPLC (Size Exclusion) ¹ | Report results | 97% |
| Concentration by Bicinchoninic Acid Protein Assay ² | Report results | 6.5 mg/mL |
| Functional Activity ¹ Cytotoxicity | Report results | ED ₅₀ = 0.03 µg/mL |
| Sterile Filtration | 0.22 micron filter-sterilized | 0.22 micron filter-sterilized |
| Sterility (post-vialing; 21-day incubation) Harpo's HTYE broth ³ , 37°C and 26°C, aerobic Trypticase soy broth, 37°C and 26°C, aerobic Sabouraud broth, 37°C and 26°C, aerobic Sheep blood agar, 37°C, aerobic Sheep blood agar, 37°C, anaerobic Thioglycollate broth, 37°C, anaerobic DMEM with 10% FBS, 37°C and 5% CO ₂ | No growth No growth No growth No growth No growth No growth No growth | No growth No growth No growth No growth No growth No growth No growth |
| Endotoxin Content ¹ | < 0.5 EU endotoxin per µg PA | 0.01 EU endotoxin per µg PA |
| Host Cell Protein ¹ | Report results | 0.6 µg/mg PA |
| Residual DNA ¹ | Report results | ~ 150 pg/mg PA |

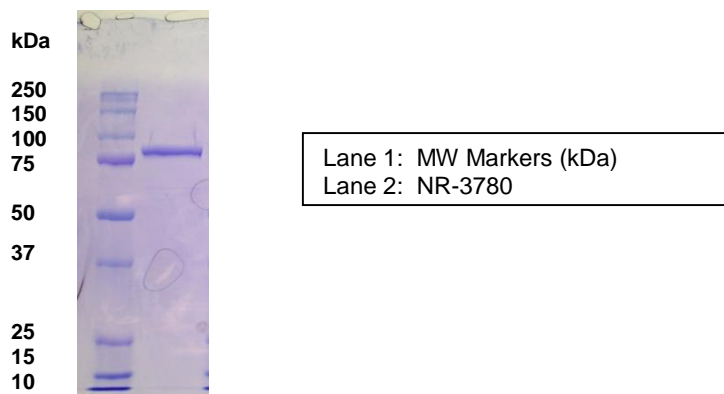
¹Pre-vialing

²Pierce Biotechnology, Inc.

³Atlas, Ronald M. Handbook of Microbiological Media. 3rd ed. Ed. Lawrence C. Parks. Boca Raton: CRC Press, 2004, p. 798.

Figure 1

1 2



Lane 1: MW Markers (kDa)
Lane 2: NR-3780

Date: 09 MAY 2008

Signature: Signature on File

Title: Technical Manager, BEI Authentication or designee

ATCC[®], on behalf of BEI Resources, hereby represents and warrants that the material provided under this certificate has been subjected by ATCC[®] or the vendor to the tests and procedures specified and that the results described, along with any other data provided in this certificate, are true and accurate to the best of ATCC[®]'s knowledge.

ATCC[®] is a trademark of the American Type Culture Collection.

You are authorized to use this product for research use only. It is not intended for human use.

