

Genomic DNA from *Brucella suis*, Strain 1330

Catalog No. NR-50164

Product Description: Genomic DNA was extracted from a preparation of *Brucella suis* (*B. suis*), strain 1330 (NCTC 10316, ATCC® 23444™), biovar 1. *B. suis*, strain 1330 was isolated from swine in 1950 by Wesley W. Spink, M.D., at the University of Minnesota Medical School, Minneapolis, Minnesota, USA.

Lot¹: 64364109

Manufacturing Date: 12AUG2016

TEST	SPECIFICATIONS	RESULTS
Genotypic Analysis Sequencing of 16S ribosomal RNA gene (~ 710 base pairs)	≥ 99% sequence identity to <i>B. suis</i> , strain 1330 (GenBank: NC_004310)	99.9% sequence identity to <i>B. suis</i> , strain 1330 (GenBank: NC_004310) ²
Agarose Gel Electrophoresis	High molecular weight chromosomal DNA	High molecular weight chromosomal DNA (Figure 1)
Concentration by PicoGreen® Measurement	0.7 to 1.5 µg in 25 to 100 µL per vial	1.0 µg in 65 µL per vial (16 µg/mL)
Functional Activity by PCR Amplification 16S ribosomal RNA gene	~ 1500 base pair amplicon	~ 1500 base pair amplicon
OD₂₆₀/OD₂₈₀ Ratio	1.7 to 2.1	1.7
Bacterial Inactivation 10% of total yield plated on agar ^{3,4}	No viable bacteria detected	No viable bacteria detected

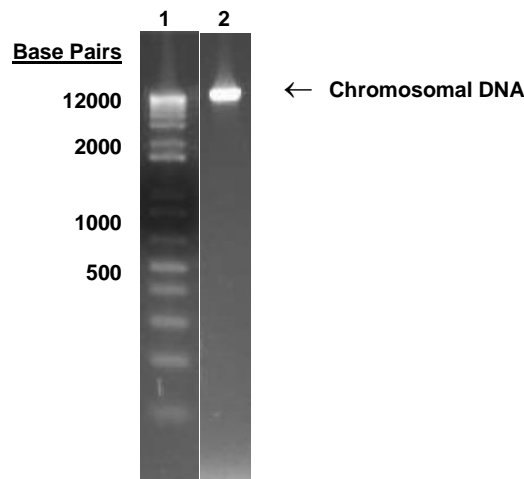
¹The bacterial preparation used for extraction of genomic DNA was produced from a culture of NR-302 (Lot 4741449). Genomic DNA was extracted using proprietary technology.

²Also consistent with other *Brucella* species.

³Inactivation was assessed for 14 days under propagation conditions.

⁴An extraction procedure was used that has been shown to consistently inactivate 100% of Gram-negative and Gram-positive bacteria.

Figure 1: Agarose Gel Electrophoresis



Lane 1: Invitrogen™ TrackIt 1 Kb Plus DNA Ladder™
Lane 2: 200 ng of NR-50164

Date: 07 FEB 2017

Signature:



BEI Authentication or designee

ATCC[®], on behalf of BEI Resources, hereby represents and warrants that the material provided under this certificate has been subjected to the tests and procedures specified and that the results described, along with any other data provided in this certificate, are true and accurate to the best of ATCC[®]'s knowledge.

ATCC[®] is a trademark of the American Type Culture Collection.

You are authorized to use this product for research use only. It is not intended for human use.

