

Mycobacterium leprae* Phenolic Glycolipid-I (PGL-I)*Catalog No. NR-19342**

This reagent is the tangible property of the U.S. Government.

Product Description: NR-19342 is a preparation of the phenolic glycolipid-I (PGL-I) of *Mycobacterium leprae* (*M. leprae*) extracted from infected armadillo liver and spleen tissue. Crude lipids were obtained from chloroform:methanol (2:1) extraction of tissues and eluted on a silica gel column followed by preparative thin layer chromatography. The fractions containing PGL-I were pooled in chloroform:methanol (2:1) and dried under a nitrogen bath.

Note: PGL-I has a glassy appearance and can be difficult to observe in the glass vial.

Lot: 70000479**Manufacturing Date: 16NOV2016**

Production and QC testing were performed by Colorado State University (CSU). The CSU documentation for lot 16.Mlep.11.16.PGL-I is attached.

ATCC®, on behalf of BEI Resources, hereby represents and warrants that the material provided under this certificate has been subjected by the contractor to the tests and procedures specified and that the results described, along with any other data provided in this certificate, are true and accurate to the best of ATCC®'s knowledge.

ATCC® is a trademark of the American Type Culture Collection.

You are authorized to use this product for research use only. It is not intended for human use.



WORK SHEET FOR M.leprae NATIVE PGL-I

General Information

BEI Catalog Number: NR-19342
CSU Lot Number: 16.Mlep.11.16.PGL-I
Fraction Type: M.leprae native PGL-I
Species: Mycobacterium leprae
Strain: NA

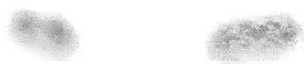
Purification Information

Starting material: 2.5g Crude lipid (2:1 Chloroform : Methanol extraction of infected Armadillo tissues)
Starting Material Lot #: Armadillo Liver #1 9F78 supernatant dated 5/8/2013 from Jade Kurihara
Protocol used (SOP #'s): PP052 Isolation of Native PGL-I from M.leprae
Date started: Oct. 18,2016
Date completed: Nov. 16,2016
Notebook; page(s): Lipid Fractionation Book #1 PP : 90-95
Additional notes (if applicable): _____

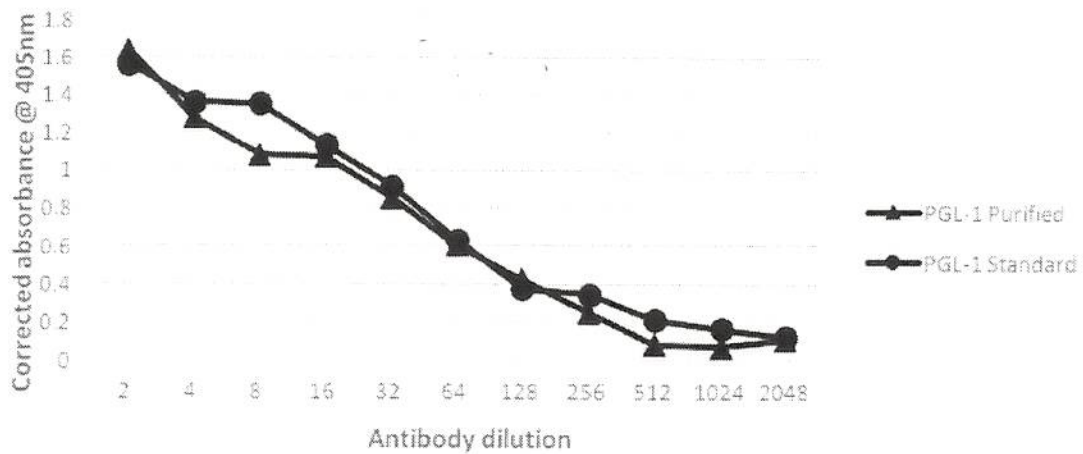
Quality Control Information:

Total volume: 9.3ml Total amount of TLIP: 211mg
TLC date: 11.11.2016 Notebook and page(s): Lipid Fractionation
Book#1 PP: 91-92
TLC Solvent System: Chloroform : Methanol : Water (90:10:1)
ELISA date: Nov.15,2016 Notebook and page(s): Lipid Fractionation
Book#1 PP: 93-95
ELISA Assay: 1ug/well of purified PGL-I, 2-fold serial dilution of mAb CS-48 culture supernatant (dilution from 1:2 to 1:2014): 2-fold serial dilution of rabbit polyclonal A192 (dilution from 1:50 to 1:51200)

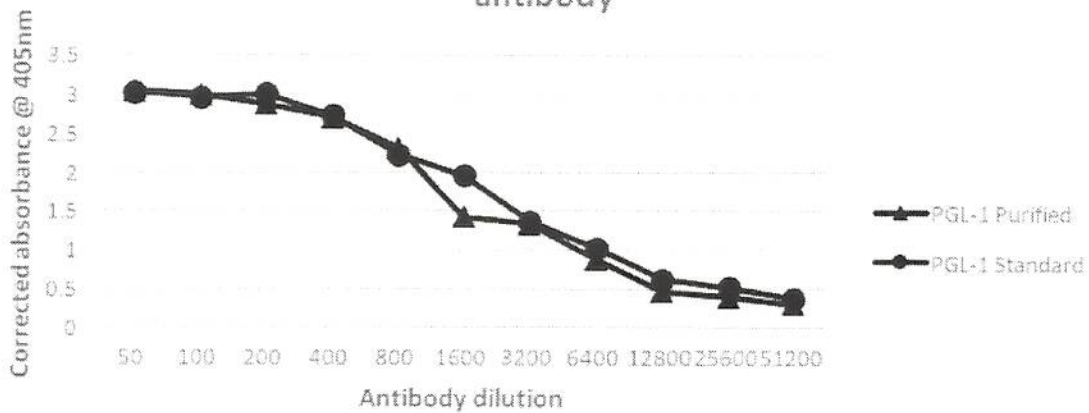
QC TLC & ELISA:



M.leprae PGL-I reactivity to mouse mAB CS-48 antibody



M.leprae PGL-I reactivity to Rabbit Polyclonal A192 antibody



Aliquot Information:

*Aliquot information indicates aliquots made at the time of QC. Bulk vials will be broken down as needed.

$$\frac{50}{21} \times 1 \text{ mg} = \frac{50}{210} \text{ mg total}$$

Anita Amin
Anita Amin
(Research Associate)

12.8.2016
date

C. McHaffey
(Laboratory Supervisor)

12-13-16
date