

GroES (Gene Rv3418c), Purified Native Protein from *Mycobacterium tuberculosis*, Strain H37Rv**Catalog No. NR-14861**

This reagent is the tangible property of the U.S. Government.

Product Description: NR-14861 is a preparation of the GroES (Gene Rv3418c) purified native proteins from the culture filtrate of *Mycobacterium tuberculosis*, strain H37Rv. A supernatant from a 40% saturated ammonium sulfate precipitation of culture filtrate proteins were precipitated with 50% saturated ammonium sulfate. The fractions containing GroES homologue were pooled and lyophilized.

Lot: 63794063**Manufacturing Date: 13DEC2016**

Production and QC testing were performed by Colorado State University. The Colorado State University documentation for lot 16.Rv.2.12.13.GroES is attached.

ATCC®, on behalf of BEI Resources, hereby represents and warrants that the material provided under this certificate has been subjected by the contractor to the tests and procedures specified and that the results described, along with any other data provided in this certificate, are true and accurate to the best of ATCC®'s knowledge.

ATCC® is a trademark of the American Type Culture Collection.
You are authorized to use this product for research use only. It is not intended for human use.



WORK SHEET FOR PURIFIED NATIVE PROTEINS

General Information

BEI Catalog Number: NR-14861
Product Description: GroES Protein (Rv3418c)
CSU Lot Number: 16.Rv.2.12.13.GroES
Species: *M. tuberculosis*
Strain: H37Rv

Purification Information

Starting material: CFP: 14.Rv.2.7.8.6.CFP.iho, 14.Rv.2.7.22.7.CFP, 14.Rv.2.9.23.5.CFP (976.8 mg total)

Starting material (select one):

CFP: Filter Sterilized Yes

Cells: Irradiated N/A

Viability Test Performed: N/A

Protocol used (SOP #'s): PP035.5

Date started: 11 / 16 / 2016

Date completed: 12 / 13 / 2016

Notebook: page(s): Megan Lucas, BEI Production Notebook #3, Starting Material: pg 4-5, Purification: pg 26-34

Additional notes (if applicable): N/A

Quality Control Information

Clarity of product/suspension after dialysis: clear

BCA: 1.122 $\mu\text{g}/\mu\text{l}$ Notebook and page(s): MCL, BEI Production #3; pg 34

Total Protein: 10.662 mg

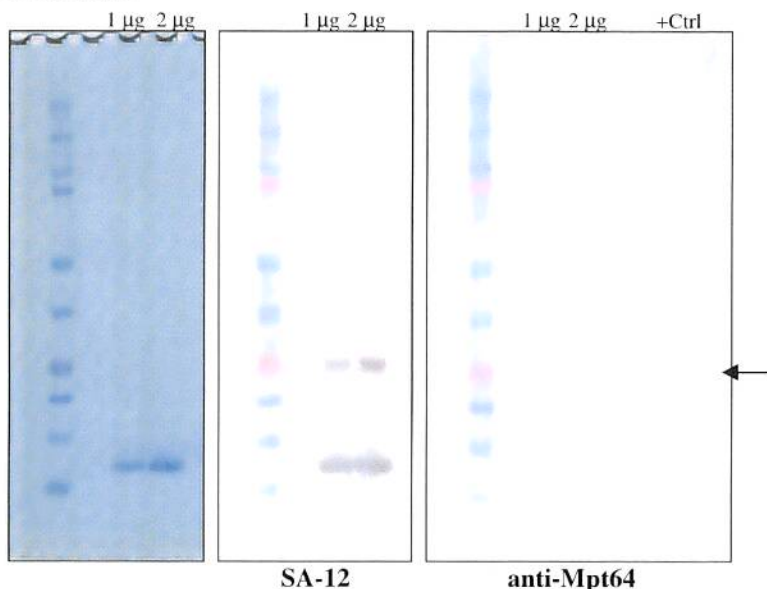
Silver Stain Date: 12 / 12 / 2016 Notebook and page(s): MCL, BEI Production #2; pg 34

Western blot Date: 12 / 12 / 2016 Antibody used: SA-12 and anti-Mpt64 mouse monoclonal

Notebook and page(s): MCL, BEI Production #2; pg 34

Mass Spectrometry information/file (if applicable): N/A

QC Gel and Blot:



Aliquot Information:

21 x 500 μg

1 x 162 μg

Megan Lucas
(Research Associate)

12-14-16
(date)

C. Lehapp
(Laboratory Supervisor)

12-14-16
(date)