

**Genomic DNA from *Yersinia pestis*, Strain PEXU2**

**Catalog No. NR-2716**

This reagent is the property of the U.S. Government.

**Product Description:** Genomic DNA was extracted from a preparation of *Yersinia pestis* (*Y. pestis*), strain PEXU2. *Y. pestis*, strain PEXU2 was isolated from rodent in Brazil, 1966.

**Lot<sup>1</sup>: 58812035**

**Manufacturing Date: 11DEC2012**

TEST	SPECIFICATIONS	RESULTS
<b>Sequencing of 16S Ribosomal RNA Gene</b> (~ 1480 base pairs)	≥ 99% sequence identity to <i>Y. pestis</i> , strain PEXU2 (GenBank: ACNS01000001.1)	100% sequence identity to <i>Y. pestis</i> , strain PEXU2 (GenBank: ACNS01000001.1)
<b>Presence of Plasmids Confirmed by PCR Amplification<sup>2</sup></b> pMT1/pFra pCD1/pYV pPCP1/pPla/pPst	~ 1200 base pair amplicon ~ 1900 base pair amplicon ~ 400 base pair amplicon	~ 1200 base pair amplicon ~ 1900 base pair amplicon ~ 400 base pair amplicon
<b>Agarose Gel Electrophoresis</b>	High molecular weight chromosomal DNA	High molecular weight chromosomal DNA (Figure 1)
<b>Concentration by PicoGreen<sup>®</sup> Measurement</b>	0.7 to 1.5 µg in 25 to 100 µL per vial	1.0 µg in 33 µL per vial (30 µg/mL)
<b>Functional Activity by PCR Amplification</b> 16S ribosomal RNA gene	~ 1500 base pair amplicon	~ 1500 base pair amplicon
<b>OD<sub>260</sub>/OD<sub>280</sub> Ratio</b>	1.7 to 2.1	1.9
<b>Bacterial Inactivation</b> 10% of total yield plated on agar <sup>3,4</sup>	No viable bacteria detected	No viable bacteria detected

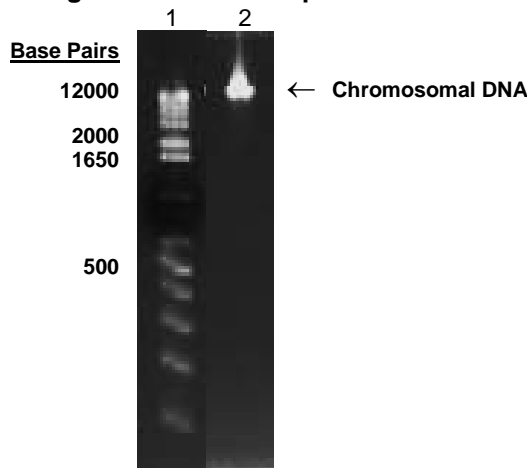
<sup>1</sup>The bacterial preparation used for extraction of genomic DNA was produced from a culture of NR-637 (Lot 4431719). Genomic DNA was extracted using proprietary technology.

<sup>2</sup>Plasmids results obtained from the source organism used to produce this lot of nucleic acid (NR-637, Lot 4431719).

<sup>3</sup>An extraction procedure was used that has been shown to consistently inactivate 100% of Gram-negative and Gram-positive bacteria.

<sup>4</sup>Plates were incubated for 7 days under propagation conditions.

**Figure 1: Agarose Gel Electrophoresis**



Lane 1: Invitrogen™ TrackIt 1 Kb Plus DNA Ladder™  
Lane 2: 200 ng of NR-2716

**Date:** 22 MAR 2017

**Signature:**



BEI Authentication or designee

ATCC®, on behalf of BEI Resources, hereby represents and warrants that the material provided under this certificate has been subjected to the tests and procedures specified and that the results described, along with any other data provided in this certificate, are true and accurate to the best of ATCC®'s knowledge.

ATCC® is a trademark of the American Type Culture Collection.

You are authorized to use this product for research use only. It is not intended for human use.

