

Polyclonal Anti-*Plasmodium falciparum* PfGRP78 (BiP), Anti-SGDEDVDSDEL Peptide (antiserum, Rabbit)

Catalog No. MRA-1246

Product Description: Antiserum to a synthetic peptide (C-SGDEDVDSDEL) of glucose-regulated protein (immunoglobulin binding protein) from *Plasmodium falciparum* (*P. falciparum*) (PfGRP78 or BiP) conjugated to keyhole limpet hemocyanin using an introduced N-terminal cysteine, was produced by immunization of rabbits.

Lot¹: 62995136

Manufacturing Date: 23OCT2014

TEST	SPECIFICATIONS	RESULTS
Functional Activity		
Western blot analysis ²	Reactive	Reactive (~ 72 kDa; Figure 1)
Immunofluorescence assay with <i>P. falciparum</i> 3D7 ³	Reactive	Reactive; fluorescence observed (Figure 2)
Indirect ELISA with synthetic peptide BSA-CSGDEDVDSDEL conjugate ⁴	Reactive	Reactive

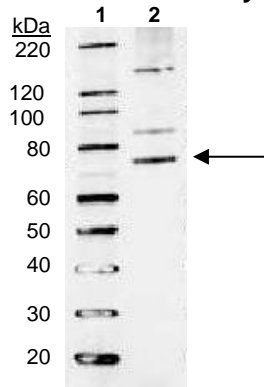
¹Synthetic peptide KLH-(CSGDEDVDSDEL) conjugate (American Peptide Company 364293) using Freund's adjuvant (1x complete, 3x incomplete) was used to immunize rabbits. Serum from one immunized rabbit was used for this lot.

²Using *P. falciparum*, strain FC27/PNG (BEI Resources MRA-914) and 1:500 dilution of MRA-1246. Secondary antibody was goat anti-rabbit IgG-HRP conjugate (Invitrogen® G21234).

³Specific labeling of *P. falciparum*, strain 3D7 (BEI Resources MRA-102) with FITC and DAPI and 1:100 dilution of MRA-1246

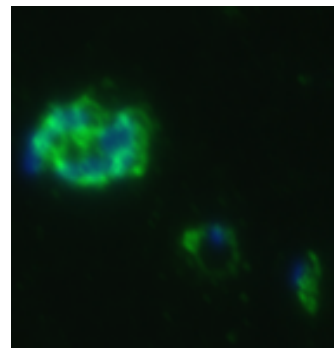
⁴Plates were coated with synthetic peptide BSA-CSGDEDVDSDEL conjugate in phosphate buffered saline (American Peptide Company 364296). Secondary antibody was goat anti-rabbit IgG-HRP conjugate.

Figure 1: Western Blot Analysis



Lane 1: Magic Mark™ XP Western Protein Standard (Invitrogen™)
 Lane 2: MRA-1246 (1:500) with 10.9 µg of MRA-914

Figure 2: *P. falciparum* Immunofluorescence Assay



Date: 06 APR 2017

Signature:

BEI Resources Authentication

ATCC®, on behalf of BEI Resources, hereby represents and warrants that the material provided under this certificate has been subjected to the tests and procedures specified and that the results described, along with any other data provided in this certificate, are true and accurate to the best of ATCC®'s knowledge.

ATCC® is a trademark of the American Type Culture Collection.
 You are authorized to use this product for research use only. It is not intended for human use.

