

Mycobacterium tuberculosis*, Strain HN878, Cell Membrane Fraction*Catalog No. NR-14833**

This reagent is the tangible property of the U.S. Government.

Product Description: NR-14833 is a preparation of the cell membrane fraction of *Mycobacterium tuberculosis*, strain HN878 and contains the cytoplasmic membrane and components of the outer lipid layer.

Lot: 70000495**Manufacturing Date: 03MAR2017**

Production and QC testing were performed by Colorado State University (CSU). The CSU documentation for lot 17.HN878.3.7.Memb is attached.

ATCC®, on behalf of BEI Resources, hereby represents and warrants that the material provided under this certificate has been subjected by the contractor to the tests and procedures specified and that the results described, along with any other data provided in this certificate, are true and accurate to the best of ATCC®'s knowledge.

ATCC® is a trademark of the American Type Culture Collection.

You are authorized to use this product for research use only. It is not intended for human use.



WORK SHEET FOR MEMBRANE

General Information

BEI Catalog Number: NR-14833
CSU Lot Number: 17.HN878.3.7.Memb
Species: *Mycobacterium tuberculosis*
Strain: HN878

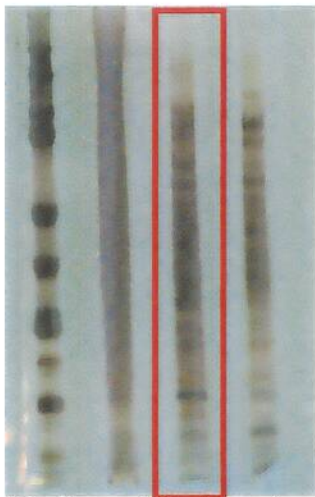
Sonication and Fractionation Information

Starting material (lot #): 14.HN878.11.11.11.WCg.a
Cells Irradiated: Yes
Viability Test Performed: No Viable Organism Detected
Cell amount (wet weight): 94.3 g
SOP #: PP008.3 Notebook pages: Kala Early's Notebook #2, pgs. 2-3
Date of French Press Sonication: 2/21-22/17; Buffer used: PBS-EDTA with EDTA-free protease inhibitor, RNase, DNase
Centrifugation Notes 100,000 x g for 4 hours, 4°C (repeat a second time)
Date 10 mM ammonium bicarbonate dialysis started: 3/2/17
date completed: 3/3/17
Notebook; page(s): First centrifuge spin = Kala Early's Notebook #2, pg. 27, Second centrifuge spin = Kala Early's Notebook #2, pg. 27

Quality Control Information

BCA: 0.743 µg /µl Notebook and page(s): Kala Early's Notebook #2, pg. 30
Total Protein: 40.981 mg
Silver Stain Date: 3/6/17 Notebook and page(s): Kala Early's Notebook #2, pg. 33

QC Gel:



*Red box = Membrane fraction

Aliquot Information:

40 x 1 mg
1 x 0.981 mg

Kala Early 3/15/17
(Research Associate) (date)

C. Melroy 3/15/17
(Laboratory Supervisor) (date)