

***Mycobacterium tuberculosis*, Strain CDC1551, Culture Filtrate Proteins**

**Catalog No. NR-14826**

This reagent is the tangible property of the U.S. Government.

**Product Description:** NR-14826 is a preparation of culture filtrate proteins (CFP) from *Mycobacterium tuberculosis*, strain CDC1551 and contains most of the excreted and secreted proteins of the organism.

**Lot<sup>1,2</sup>: 60685353**

**Manufacturing Date: 25SEP2010**

TEST	SPECIFICATIONS	RESULTS
<b>SDS-PAGE (Silver Stain)</b>	Report results	Multiple protein bands visible (Figure 1)
<b>Concentration by Bicinchoninic Acid Protein Assay<sup>3</sup></b>	Report results	0.802 mg per mL
<b>Western Blot Analysis</b> Monoclonal anti-SodA <sup>4</sup> Monoclonal anti-GroEL2 <sup>5</sup> Monoclonal anti-Ag85 Complex <sup>6</sup> Monoclonal anti-GroES <sup>7</sup> Monoclonal anti-PhoS1 <sup>8</sup> Monoclonal anti-DnaK <sup>9</sup>	Reactive Reactive Reactive Reactive Reactive Reactive	Reactive (Figure 2) Reactive (Figure 2) Reactive (Figure 2) Reactive (Figure 2) Reactive (Figure 2) Reactive (Figure 2)

<sup>1</sup>Production and QC testing were performed by Colorado State University (CSU) under the TB Vaccine Testing and Research Materials Contract (NIH). The CSU documentation for bulk lot 10.CSU93.9.7.7.CFP is attached.

<sup>2</sup>Retesting of NR-14826 lot 60685353 was performed by BEI Resources in April 2017 to confirm product stability.

<sup>3</sup>Using BSA as a standard

<sup>4</sup>*M. leprae* anti-SodA monoclonal antibody (BEI Resources, NR-19847) (1:20 dilution)

<sup>5</sup>*M. tuberculosis* anti-GroEL2 monoclonal antibody (BEI Resources, NR-13813) (1:100 dilution)

<sup>6</sup>*M. tuberculosis* anti-Ag85 complex monoclonal antibody (BEI Resources, NR-13816) (1:20 dilution)

<sup>7</sup>*M. tuberculosis* anti-GroES monoclonal antibody (BEI Resources, NR-49223) (1:1000 dilution)

<sup>8</sup>*M. tuberculosis* anti-PhoS1 monoclonal antibody (BEI Resources, NR-13790) (1:100 dilution)

<sup>9</sup>*M. tuberculosis* anti-DnaK (clone B) monoclonal antibody (BEI Resources, NR-50100) (1:1000 dilution)

**Date:** 25 MAY 2017

**Signature:**

BEI Resources Authentication

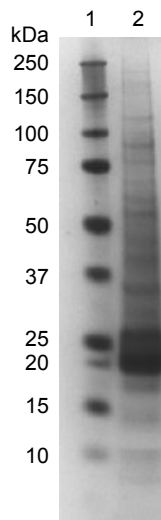
ATCC®, on behalf of BEI Resources, hereby represents and warrants that the material provided under this certificate has been subjected by to the tests and procedures specified and that the results described, along with any other data provided in this certificate, are true and accurate to the best of ATCC®'s knowledge.

ATCC® is a trademark of the American Type Culture Collection.

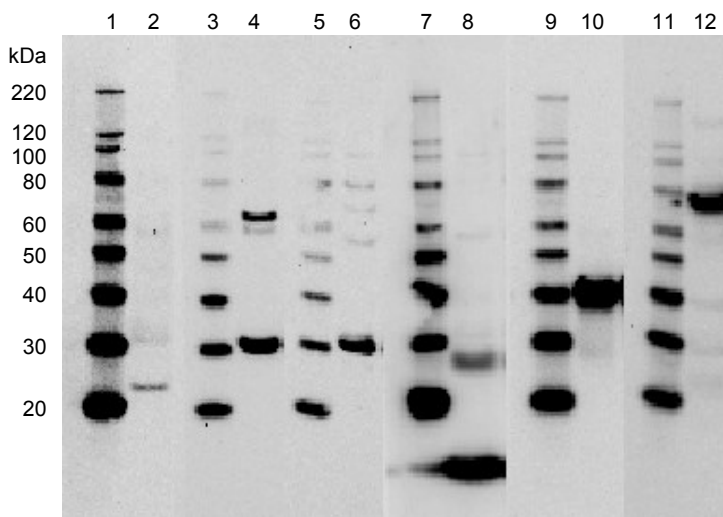
You are authorized to use this product for research use only. It is not intended for human use.



**Figure 1: SDS-PAGE of NR-14826**  
 Lane 1: Precision Plus Protein™ Standard  
 Lane 2: NR-14826, 16 µg



**Figure 2: Western Blots of Prominent Culture Filtrate Proteins**



Lane 1: MagicMark™ XP Protein Standard  
 Lane 2: NR-14826 (16 µg) with anti-SodA  
 Lane 3: MagicMark™ XP Protein Standard  
 Lane 4: NR-14826 (16 µg) with anti-GroEL2  
 Lane 5: MagicMark™ XP Protein Standard  
 Lane 6: NR-14826 (16 µg) with anti-Ag85 complex  
 Lane 7: MagicMark™ XP Protein Standard  
 Lane 8: NR-14826 (16 µg) with anti-GroES  
 Lane 9: MagicMark™ XP Protein Standard  
 Lane 10: NR-14826 (16 µg) with anti-PhoS1  
 Lane 11: MagicMark™ XP Protein Standard  
 Lane 12: NR-14826 (16 µg) with anti-DnaK

WORK SHEET FOR CULTURE FILTRATE PROTEIN

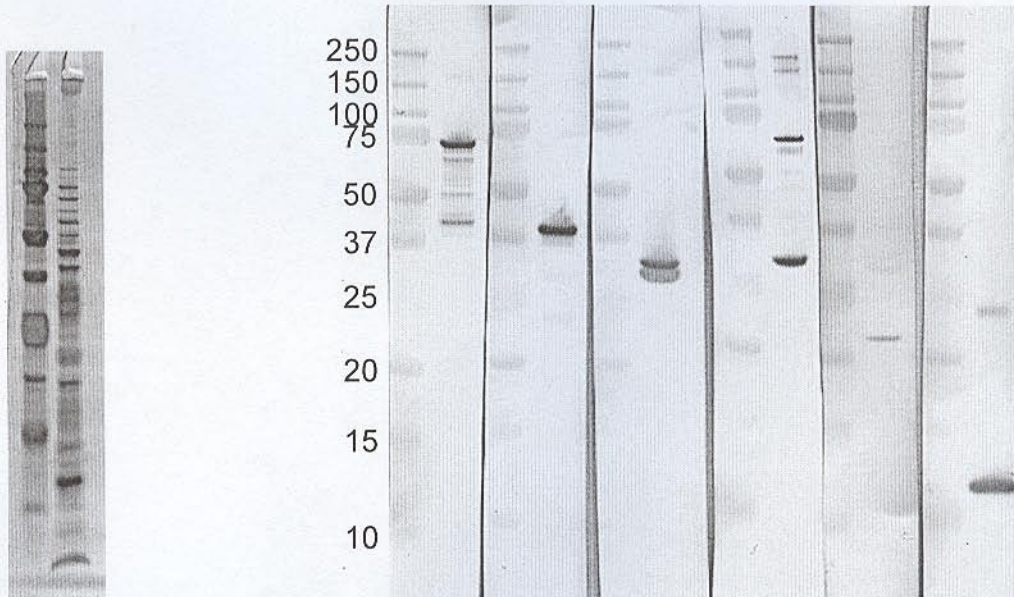
General Information

Lot Number: 10.CSU93.9.7.7.CFP  
Species: *Mycobacterium tuberculosis*  
Strain: CDC1551  
Date Harvested/Finished: 09/20/10  
By: Phillip Knabenbauer  
NaN<sub>3</sub> Added: Yes or No  
Date ultrafiltration started: 09/20/10  
Date completed: 09/22/10  
Date 10 mM ammonium bicarbonate dialysis started: 09/22/10  
date completed: 09/25/10

Quality Control Information

Clarity of product/suspension after dialysis: Clear  
Passed through 0.2 µm filter: Yes or No  
BCA: 0.88 µg/µl. Notebook and page(s): Prucha#1 pg.95  
Total volume: 125 Total amount of Protein: 110.3 mg  
Silver Stain Date: 09/27/10. Notebook and page(s): Prucha #1 pg.95  
Western Blot of QC Antibodies Date: 09/27/10. Notebook and page(s): Prucha #1 pg.95

QC Gel and Blot:



Aliquot Information:

None

C. McHaffey  
(Postdoctoral fellow)

09/28/2010  
(date)

Maria Lucas  
(Laboratory Supervisor)

9-28-10  
(date)