

Genomic DNA from *Campylobacter jejuni* subsp. *doylei*, Strain 093

Catalog No. NR-4207

Product Description: Genomic DNA was extracted from a preparation of *Campylobacter jejuni* (*C. jejuni*) subsp. *doylei*, strain 093. *C. jejuni* subsp. *doylei*, strain 093 was isolated in 1986 from the feces of a young child with diarrhea in Australia.

Lot^{1,2}: 70000227

Manufacturing Date: 13DEC2016

TEST	SPECIFICATIONS	RESULTS
Sequencing of 16S Ribosomal RNA Gene (~ 1400 base pairs)	≥ 99% sequence identity to <i>C. jejuni</i> subsp. <i>doylei</i> , strain 093 (GenBank: JNJR01000032)	100% sequence identity to <i>C. jejuni</i> subsp. <i>doylei</i> , strain 093 (GenBank: JNJR01000032)
Agarose Gel Electrophoresis	High molecular weight chromosomal DNA	High molecular weight chromosomal DNA (Figure 1)
Concentration by PicoGreen® Measurement	0.7 to 1.5 µg in 25 to 100 µL per vial	0.9 µg in 42 µL per vial (21 µg/mL)
Amount per vial	0.7 to 1.5 µg	0.9 µg
Functional Activity by PCR Amplification 16S ribosomal RNA gene	~ 1500 base pair amplicon	~ 1500 base pair amplicon
OD₂₆₀/OD₂₈₀ Ratio	1.7 to 2.1	1.7
Bacterial Inactivation 10% of total yield plated on agar ^{3,4}	No viable bacteria detected	No viable bacteria detected

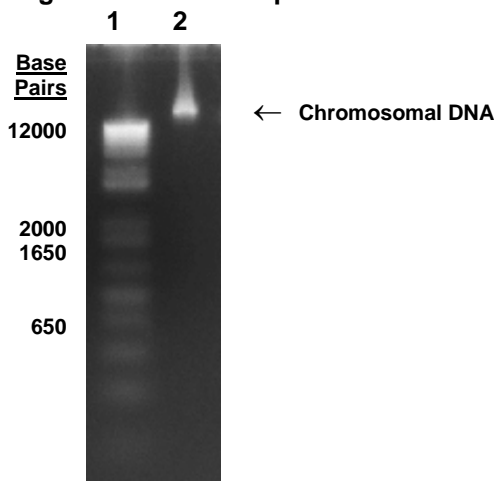
¹The bacterial preparation used for extraction of genomic DNA was produced by culture of BEI Resources NR-124 (Lot: 3750280). Genomic DNA was extracted using proprietary technology.

²NR-4207, Lot 70000227, was vialled in TE buffer (10 mM Tris-HCl, 1 mM EDTA, pH ~ 8.0).

³14 days at 37°C in a microaerophilic (~ 6-16% O₂ and 2-10% CO₂) atmosphere on Tryptic Soy agar with 5% defibrinated sheep blood.

⁴An extraction procedure was used that has been shown to consistently inactivate 100% of Gram-positive and Gram-negative bacteria.

Figure 1: Agarose Gel Electrophoresis



Lane 1: Invitrogen™ TrackIt™ 1 Kb Plus DNA Ladder
Lane 2: 200 ng of NR-4207

Date: 27 JUN 2017

Signature:



BEI Resources Authentication

ATCC®, on behalf of BEI Resources, hereby represents and warrants that the material provided under this certificate has been subjected to the tests and procedures specified and that the results described, along with any other data provided in this certificate, are true and accurate to the best of ATCC®'s knowledge.

ATCC® is a trademark of the American Type Culture Collection.

You are authorized to use this product for research use only. It is not intended for human use.

