

**Genomic DNA from *Brucella abortus*, Strain 292**

**Catalog No. NR-50166**

**Product Description:** Genomic DNA was extracted from a preparation of *Brucella abortus* (*B. abortus*), strain 292 (NCTC 10503, ATCC® 23451™), biovar 4. *B. abortus*, strain 292 was isolated from bovine fetus in 1960 by the Central Veterinary Laboratory in Weybridge, England.

**Lot<sup>1,2</sup>: 64364117**

**Manufacturing Date: 24AUG2016**

TEST	SPECIFICATIONS	RESULTS
<b>Genotypic Analysis</b> Sequencing of 16S ribosomal RNA gene (~ 830 base pairs)	≥ 99% sequence identity to <i>B. abortus</i> , strain 292 (GenBank: ACBH01000022.1)	100% sequence identity to <i>B. abortus</i> , strain 292 (GenBank: ACBH01000022.1)
<b>Agarose Gel Electrophoresis</b>	High molecular weight chromosomal DNA	High molecular weight chromosomal DNA (Figure 1)
<b>Concentration by PicoGreen® Measurement</b>	0.7 to 1.5 µg in 25 to 100 µL per vial	1.0 µg in 35 µL per vial (28 µg/mL)
<b>Amount per vial</b>	0.7 to 1.5 µg	1.0 µg
<b>Functional Activity by PCR Amplification</b> 16S ribosomal RNA gene	~ 1500 base pair amplicon	~ 1500 base pair amplicon
<b>OD<sub>260</sub>/OD<sub>280</sub> Ratio</b>	1.7 to 2.1	1.7
<b>Bacterial Inactivation</b> 10% of total yield plated on agar <sup>3,4</sup>	No viable bacteria detected	No viable bacteria detected

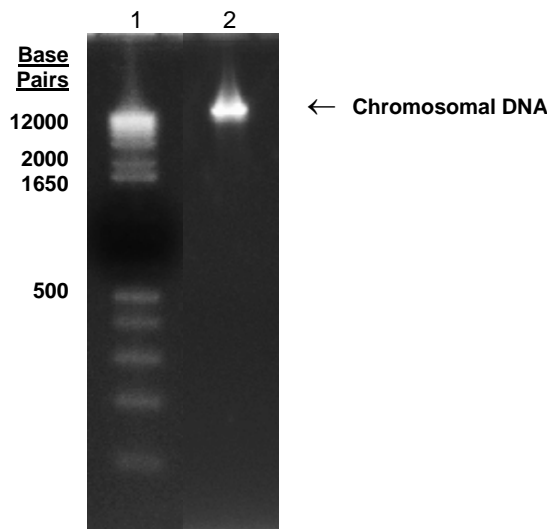
<sup>1</sup>The bacterial preparation used for extraction of genomic DNA was produced from a culture of NR-233 (Lot 4741462). Genomic DNA was extracted using proprietary technology.

<sup>2</sup>NR-50166, Lot 64364117, was vialled in Tris-HCl buffer (10 mM Tris-HCl, pH 8.0 – 8.5) and does not contain EDTA. For long-term storage, EDTA may be added to a final concentration of 0.1 mM to 1 mM.

<sup>3</sup>Assessed for 7 days under propagation conditions.

<sup>4</sup>An extraction procedure was used that has been shown to consistently inactivate 100% of Gram-negative and Gram-positive bacteria.

**Figure 1: Agarose Gel Electrophoresis**



Lane 1: Invitrogen™ TrackIt 1 Kb Plus DNA Ladder™  
Lane 2: 200 ng of NR-50166

**Date:** 28 JUN 2017

**Signature:**



BEI Authentication or designee

ATCC®, on behalf of BEI Resources, hereby represents and warrants that the material provided under this certificate has been subjected to the tests and procedures specified and that the results described, along with any other data provided in this certificate, are true and accurate to the best of ATCC®'s knowledge.

ATCC® is a trademark of the American Type Culture Collection.

You are authorized to use this product for research use only. It is not intended for human use.

