

**Cryptococcus gattii, Strain C6**

**Catalog No. NR-50422**

**Product Description:** *Cryptococcus gattii* (*C. gattii*), strain C6 was isolated from an unknown human source (probably cerebrospinal fluid) in the Pacific Northwest region of North America. *C. gattii*, strain C6 was deposited as lineage VGIIa and resistant to azoles.

**Lot<sup>1</sup>: 2190**

**Manufacturing Date: 20DEC2016**

TEST	SPECIFICATIONS	RESULTS
<b>Phenotypic Analysis</b> Cellular morphology <sup>2</sup>  Colony morphology <sup>2</sup> Canavanine-glycine-bromthymol blue (CGB) differential medium <sup>3</sup>	Report results  Report results Report results	Globose to subglobose; single or budding (Figure 1A) Entire, smooth and cream (Figure 1B) Blue
<b>Genotypic Analysis</b> Sequencing of partial 18S rRNA gene, internal transcribed spacer (ITS) 1, 5.8S rRNA gene, ITS 2, partial 28S rRNA (~ 520 base pairs) Sequencing of 26S rRNA gene (~ 620 base pairs)	≥ 99% sequence identity to <i>C. gattii</i> (GenBank: FJ914888.1)  ≥ 99% sequence identity to <i>C. gattii</i> (GenBank: KC171326.1)	100% sequence identity to <i>C. gattii</i> (GenBank: FJ914888.1)  100% sequence identity to <i>C. gattii</i> (GenBank: KC171326.1)
<b>Antimicrobial Susceptibility<sup>4,5</sup></b> Fluconazole	Report MIC (µg/mL)	24 µg/mL
<b>Purity<sup>6</sup></b> Nutrient broth with 0.1% Yeast Extract at 25°C Nutrient broth with 0.1% Yeast Extract at 37°C	No bacterial growth No bacterial growth	No bacterial growth No bacterial growth
<b>Viability (post-freeze)<sup>2</sup></b>	Growth	Growth

<sup>1</sup>NR-50422 was produced by inoculation of the deposited material onto Yeast Mold agar and incubated for 6 days at 25°C in an aerobic atmosphere. Cells were harvested from agar with 20% glycerol.

<sup>2</sup>3 days at 25°C in an aerobic atmosphere on modified Sabouraud Dextrose agar

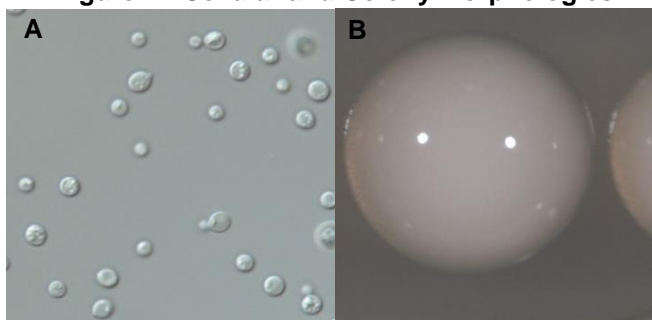
<sup>3</sup>2 days at 26°C in an aerobic atmosphere. CGB medium differentiates *C. gattii* from *C. neoformans* based on the ability of *C. gattii* isolates to grow in the presence of L-canavanine and to assimilate glycine as a sole carbon source, resulting in a blue color. *C. neoformans* isolates will show yellow to light green on CGB medium [McTaggart, L., et al. "Rapid Identification of *Cryptococcus neoformans* var. *grubii*, *C. neoformans* var. *neoformans*, and *C. gattii* by Use of Rapid Biochemical Tests, Differential Media, and DNA Sequencing." *J. Clin. Microbiol.* 49 (2011): 2522-2527. PubMed: 21593254.].

<sup>4</sup>2 days at 35°C in an aerobic atmosphere on RPMI 1640 agar with MOPS and 2% glucose (Remel R04067)

<sup>5</sup>bioMérieux Etest® 510858

<sup>6</sup>Clarity of broth was determined by visual inspection after 5 days in an aerobic atmosphere.

**Figure 1: Cellular and Colony Morphologies**



## Certificate of Analysis for NR-50422

**Date:** 09 JUN 2017

**Signature:**



BEI Resources Authentication

ATCC®, on behalf of BEI Resources, hereby represents and warrants that the material provided under this certificate has been subjected to the tests and procedures specified and that the results described, along with any other data provided in this certificate, are true and accurate to the best of ATCC®'s knowledge.

ATCC® is a trademark of the American Type Culture Collection.

You are authorized to use this product for research use only. It is not intended for human use.

