

**Genomic RNA from Dengue Virus Type 2, New Guinea C (NGC)**

**Catalog No. NR-4288**

**Product Description:** Genomic RNA was isolated from a preparation of cell lysate and supernatant from Rhesus monkey kidney (LLC-MK2 derivative) cells<sup>1</sup> infected with dengue virus type 2 (DEN-2), New Guinea C (NGC).

**Lot<sup>2</sup>: 70004142**

**Manufacturing Date: 06APR2017**

TEST	SPECIFICATIONS	RESULTS
Sequencing of Species-Specific Region (875 nucleotides)	Consistent with DEN-2, NGC Consistent with NR-84	99% identity with DEN-2, NGC (GenBank: KM204118) Consistent with NR-84
Functional Activity by RT-PCR Amplification <sup>3</sup>	~ 970 bp amplicon	~ 970 bp amplicon (Figure 1)
Total RNA Content by RiboGreen <sup>®</sup> Measurement (Viral, Cellular, and Carrier)	Report results	24.9 ng per 100 µL
Viral RNA Content by Droplet Digital RT-PCR	Report results	4.4 x 10 <sup>4</sup> copies per µL
Virus Inactivation 10% of total yield inoculated on LLC-MK2 <sup>1</sup> derivative cells and evaluated for immunofluorescence <sup>4,5</sup>	No viable virus detected	No viable virus detected

<sup>1</sup>LLC-MK2 derivative cells: ATCC<sup>®</sup> CCL-7.1<sup>™</sup>

<sup>2</sup>Nucleic acid was extracted from a preparation of DEN-2, NGC (BEI Resources NR-84, Lot 64347312) using a QIAamp<sup>®</sup> Viral RNA Mini Kit (Qiagen 52906).

<sup>3</sup>Reverse transcription was performed using an iScript<sup>™</sup> cDNA Synthesis Kit (Bio-Rad 170-8891) with 10 µL of NR-4288 in a 20 µL reaction; PCR was performed using iTaq<sup>™</sup> DNA Polymerase (Bio-Rad 170-8870) with 5 µL of cDNA in a 50 µL reaction.

<sup>4</sup>Using Anti-Dengue Virus Complex Antibody, clone D3-2H2-9-21 (Millipore MAB8705)

<sup>5</sup>Use of the QIAamp<sup>®</sup> Viral RNA Mini Kit has been demonstrated to consistently inactivate dengue viruses as shown by the absence of cytopathic effect and viral antigen expression by indirect immunofluorescence after plating the entire extract on virus-susceptible cells.

**Date:** 30 JUN 2017

**Signature:**



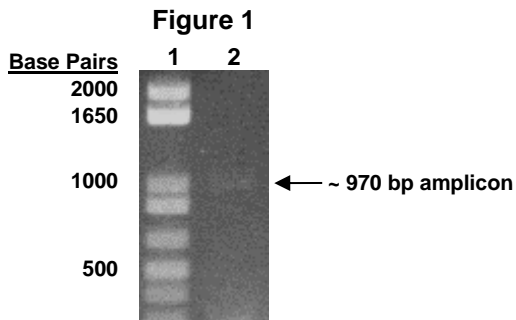
BEI Resources Authentication

ATCC<sup>®</sup>, on behalf of BEI Resources, hereby represents and warrants that the material provided under this certificate has been subjected to the tests and procedures specified and that the results described, along with any other data provided in this certificate, are true and accurate to the best of ATCC<sup>®</sup>'s knowledge.

ATCC<sup>®</sup> is a trademark of the American Type Culture Collection.

You are authorized to use this product for research use only. It is not intended for human use.





Lane 1: Invitrogen™ TrackIt™ 1 Kb Plus DNA Ladder  
Lane 2: NR-4288