

Genomic RNA from Dengue Virus Type 4, H241 (Tissue Culture Adapted)

Catalog No. NR-4289

Product Description: Genomic RNA was isolated from a preparation of cell lysate and supernatant from Rhesus monkey kidney (LLC-MK2 derivative) cells¹ infected with dengue virus type 4 (DEN-4), H241 (tissue culture adapted).

Lot²: 70004141

Manufacturing Date: 11APR2017

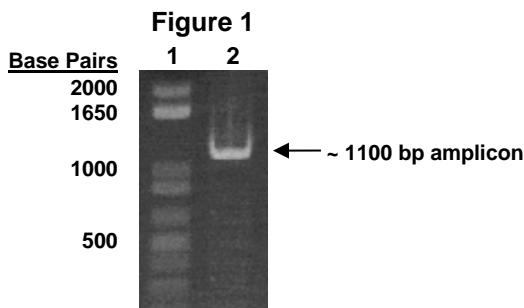
TEST	SPECIFICATIONS	RESULTS
Sequencing of Species-Specific Region (987 nucleotides)	Consistent with DEN-4, H241	99% identity with DEN-4, H241 (GenBank: AY947539)
Functional Activity by RT-PCR Amplification³	~ 1100 bp amplicon	~ 1100 bp amplicon (Figure 1)
Total RNA Content by RiboGreen[®] Measurement (Viral, Cellular, and Carrier)	Report results	26.7 ng per 100 µL
Viral RNA Content by Droplet Digital RT-PCR	Report results	4.6 × 10 ⁴ copies per µL
Virus Inactivation 10% of total yield inoculated on LLC-MK2 ^{1,4} derivative cells and evaluated for immunofluorescence ^{1,4}	No viable virus detected	No viable virus detected

¹LLC-MK2 derivative cells: ATCC[®] CCL-7.1[™]

²Nucleic acid was extracted from a preparation of DEN-4, H241 (BEI Resources NR-86, Lot 64347313) using a QIAamp[®] Viral RNA Mini Kit (Qiagen 52906).

³Reverse transcription was performed using an iScript[™] cDNA Synthesis Kit (Bio-Rad 170-8891) with 10 µL of NR-4289 in a 20 µL reaction; PCR was performed using iTaq[™] DNA Polymerase (Bio-Rad 170-8870) with 5 µL of cDNA in a 50 µL reaction.

⁴Use of the QIAamp[®] Viral RNA Mini Kit has been demonstrated to consistently inactivate dengue viruses as shown by the absence of cytopathic effect and viral antigen expression by indirect immunofluorescence after plating the entire extract on virus-susceptible cells.



Lane 1: Invitrogen[™] TrackIt[™] 1 Kb Plus DNA Ladder
Lane 2: NR-4289

Date: 05 JUL 2017

Signature: *Michael Q. Gynther*

BEI Resources Authentication

ATCC[®], on behalf of BEI Resources, hereby represents and warrants that the material provided under this certificate has been subjected to the tests and procedures specified and that the results described, along with any other data provided in this certificate, are true and accurate to the best of ATCC[®]'s knowledge.

ATCC[®] is a trademark of the American Type Culture Collection.
You are authorized to use this product for research use only. It is not intended for human use.

