

Enterococcus faecalis, Strain TX2137

Catalog No. HM-432

Product Description: *Enterococcus faecalis* (*E. faecalis*), strain TX2137 was isolated from a human gastrointestinal tract.

Lot^{1,2}: 70005397

Manufacturing Date: 10MAY2017

TEST	SPECIFICATIONS	RESULTS
Phenotypic Analysis Cellular morphology Colony morphology ³ Motility (wet mount)	Gram-positive cocci Report results Report results	Gram-positive cocci Circular, convex, entire, smooth and white (Figure 1) Non-motile
Genotypic Analysis Sequencing of 16S ribosomal RNA gene (~680 base pairs) (~750 base pairs)	≥ 99% sequence identity to <i>E. faecalis</i> , strain TX2137 (GenBank: AEBQ01000073.1) Consistent with <i>E. faecalis</i>	100% sequence identity to <i>E. faecalis</i> , strain TX2137 (GenBank: AEBQ01000073.1) Consistent with <i>E. faecalis</i>
Purity (post-freeze)⁴	Consistent with expected colony morphology	Consistent with expected colony morphology
Viability (post-freeze)³	Growth	Growth

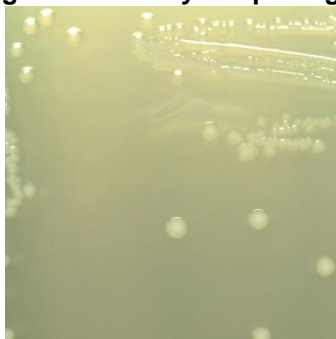
¹Quality control of HMP material is only performed to demonstrate that the material distributed by BEI Resources is identical to the deposited material. It should not be considered a complete characterization of the deposited organism.

²*E. faecalis*, strain TX2137 was deposited by Cesar A. Arias, M.D., Ph.D., Assistant Professor of Medicine, Department of Internal Medicine, The University of Texas Health Science Center at Houston, Houston, Texas, USA. Lot 70005397 of HM-432 was produced by inoculation of HM-432 (Lot: 61086679) into Brain Heart Infusion broth and incubated for 1 day at 37°C in an aerobic atmosphere with 5% CO₂. Broth inoculum was added to Brain Heart Infusion agar kolles, which were grown for 1 day at 37°C in an aerobic atmosphere with 5% CO₂ to produce this lot.

³1 day at 37°C in an aerobic atmosphere with 5% CO₂ on Brain Heart Infusion agar

⁴Purity of this lot was assessed for 7 days at 37°C in an aerobic atmosphere with 5% CO₂ on Brain Heart Infusion agar and on Tryptic Soy agar with 5% defibrinated sheep blood.

Figure 1: Colony Morphology



Certificate of Analysis for HM-432

Date: 10 JUL 2017

Signature:



BEI Resources Authentication

ATCC®, on behalf of BEI Resources, hereby represents and warrants that the material provided under this certificate has been subjected by ATCC® to the tests and procedures specified and that the results described, along with any other data provided in this certificate, are true and accurate to the best of ATCC®'s knowledge.

ATCC® is a trademark of the American Type Culture Collection.
You are authorized to use this product for research use only. It is not intended for human use.

